

Datasheet for ABIN630917 **anti-PSME3 antibody (N-Term)**

3 Images



[Go to Product page](#)

Overview

Quantity:	100 µL
Target:	PSME3
Binding Specificity:	N-Term
Reactivity:	Human, Rat, Mouse, Dog
Host:	Rabbit
Clonality:	Polyclonal
Conjugate:	This PSME3 antibody is un-conjugated
Application:	Western Blotting (WB), Immunohistochemistry (IHC)

Product Details

Immunogen:	PSME3 antibody was raised using the N terminal of PSME3 corresponding to a region with amino acids PILNIHDLTQIHSDMNLVPDPILLTNSHDGLDGPTYKKRRLDECEEFQ
Specificity:	PSME3 antibody was raised against the N terminal of PSME3
Purification:	Affinity purified

Target Details

Target:	PSME3
Alternative Name:	PSME3 (PSME3 Products)
Background:	The 26S proteasome is a multicatalytic proteinase complex with a highly ordered structure composed of 2 complexes, a 20S core and a 19S regulator. Proteasomes are distributed throughout eukaryotic cells at a high concentration and cleave peptides in an ATP/ubiquitin-

Target Details

dependent process in a non-lysosomal pathway. An essential function of a modified proteasome, the immunoproteasome, is the processing of class I MHC peptides.

Molecular Weight: 31 kDa (MW of target protein)

Pathways: [Mitotic G1-G1/S Phases](#), [DNA Replication](#), [Positive Regulation of Endopeptidase Activity](#), [Hepatitis C](#), [Synthesis of DNA](#)

Application Details

Application Notes: WB: 0.25 µg/mL, IHC: 4-8 µg/mL
Optimal conditions should be determined by the investigator.

Comment: PSME3 Blocking Peptide, catalog no. 33R-7157, is also available for use as a blocking control in assays to test for specificity of this PSME3 antibody

Restrictions: For Research Use only

Handling

Format: Lyophilized

Reconstitution: Lyophilized powder. Add distilled water for a 1 mg/mL concentration of PSME3 antibody in PBS

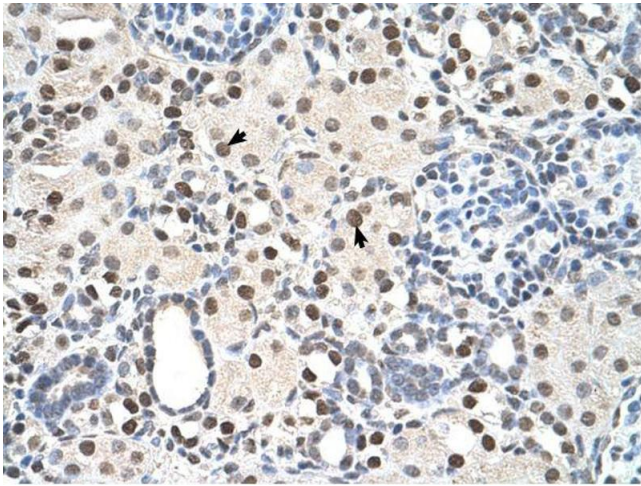
Concentration: Lot specific

Buffer: PBS

Handling Advice: Avoid repeated freeze/thaw cycles.
Dilute only prior to immediate use.

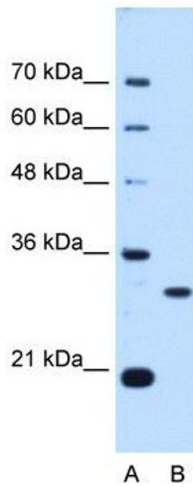
Storage: 4 °C/-20 °C

Storage Comment: Store at 2-8 °C for short periods. For longer periods of storage, store at -20 °C.



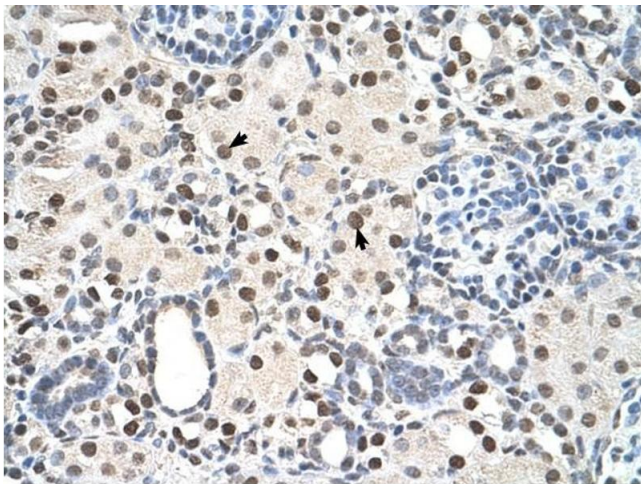
Immunohistochemistry

Image 1. PSME3 antibody was used for immunohistochemistry at a concentration of 4-8 ug/ml. Magnification is at 400X



Western Blotting

Image 2. PSME3 antibody used at 0.25 ug/ml to detect target protein.



Immunohistochemistry

Image 3. PSME3 antibody was used for immunohistochemistry at a concentration of 4-8 ug/ml to stain Epithelial cells of renal tubule (arrows) in Human Kidney. Magnification is at 400X