

Datasheet for ABIN630925 **anti-CAMLG antibody (N-Term)**



[Go to Product page](#)

1 Image

Overview

Quantity:	100 µL
Target:	CAMLG
Binding Specificity:	N-Term
Reactivity:	Human
Host:	Rabbit
Clonality:	Polyclonal
Conjugate:	This CAMLG antibody is un-conjugated
Application:	Western Blotting (WB)

Product Details

Immunogen:	CAMLG antibody was raised using the N terminal of CAMLG corresponding to a region with amino acids LLMNSEQRINRIMGFHRPGSGAEEESQTKSKQQDSDKLNLSVPSVSKRV
Specificity:	CAMLG antibody was raised against the N terminal of CAMLG
Purification:	Affinity purified

Target Details

Target:	CAMLG
Alternative Name:	CAMLG (CAMLG Products)
Background:	The immunosuppressant drug cyclosporin A blocks a calcium-dependent signal from the T-cell receptor (TCR) that normally leads to T-cell activation. When bound to cyclophilin B, cyclosporin A binds and inactivates the key signaling intermediate calcineurin. CAMLG functions similarly to

Target Details

cyclosporin A, binding to cyclophilin B and acting downstream of the TCR and upstream of calcineurin by causing an influx of calcium. This integral membrane protein appears to be a new participant in the calcium signal transduction pathway, implicating cyclophilin B in calcium signaling, even in the absence of cyclosporin.

Molecular Weight: 33 kDa (MW of target protein)

Pathways: [EGFR Signaling Pathway](#)

Application Details

Application Notes: WB: 1 µg/mL
Optimal conditions should be determined by the investigator.

Comment: CAMLG Blocking Peptide, catalog no. 33R-5170, is also available for use as a blocking control in assays to test for specificity of this CAMLG antibody

Restrictions: For Research Use only

Handling

Format: Lyophilized

Reconstitution: Lyophilized powder. Add distilled water for a 1 mg/mL concentration of CAMLG antibody in PBS

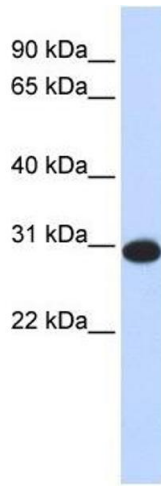
Concentration: Lot specific

Buffer: PBS

Handling Advice: Avoid repeated freeze/thaw cycles.
Dilute only prior to immediate use.

Storage: 4 °C/-20 °C

Storage Comment: Store at 2-8 °C for short periods. For longer periods of storage, store at -20 °C.



Western Blotting

Image 1. CAMLG antibody used at 1 ug/ml to detect target protein.