

Datasheet for ABIN630939 **anti-LASP1 antibody (C-Term)**



[Go to Product page](#)

1 Image

Overview

Quantity:	100 µL
Target:	LASP1
Binding Specificity:	C-Term
Reactivity:	Human, Mouse, Rat
Host:	Rabbit
Clonality:	Polyclonal
Conjugate:	This LASP1 antibody is un-conjugated
Application:	Western Blotting (WB)

Product Details

Immunogen:	LASP1 antibody was raised using the C terminal of LASP1 corresponding to a region with amino acids SYGGYKEPAAPVSIQRSAPGGGGKRYRAVYDYSAADEDEVSFQDGDITVN
Specificity:	LASP1 antibody was raised against the C terminal of LASP1
Purification:	Affinity purified

Target Details

Target:	LASP1
Alternative Name:	LASP1 (LASP1 Products)
Background:	LASP1 is a member of a LIM protein subfamily characterized by a LIM motif and a domain of Src homology region 3. It functions as an actin-binding protein and possibly in cytoskeletal organization.

Target Details

Molecular Weight: 30 kDa (MW of target protein)

Application Details

Application Notes: WB: 1 µg/mL
Optimal conditions should be determined by the investigator.

Comment: LASP1 Blocking Peptide, catalog no. 33R-8949, is also available for use as a blocking control in assays to test for specificity of this LASP1 antibody

Restrictions: For Research Use only

Handling

Format: Lyophilized

Reconstitution: Lyophilized powder. Add distilled water for a 1 mg/mL concentration of LASP1 antibody in PBS

Concentration: Lot specific

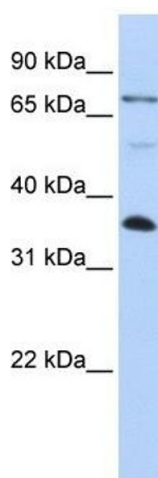
Buffer: PBS

Handling Advice: Avoid repeated freeze/thaw cycles.
Dilute only prior to immediate use.

Storage: 4 °C/-20 °C

Storage Comment: Store at 2-8 °C for short periods. For longer periods of storage, store at -20 °C.

Images



Western Blotting

Image 1. LASP1 antibody used at 1 µg/ml to detect target protein.