

Datasheet for ABIN630944 **anti-PNPLA3 antibody (C-Term)**

3 Images



[Go to Product page](#)

Overview

Quantity:	100 µL
Target:	PNPLA3
Binding Specificity:	C-Term
Reactivity:	Human
Host:	Rabbit
Clonality:	Polyclonal
Conjugate:	This PNPLA3 antibody is un-conjugated
Application:	Western Blotting (WB), Immunohistochemistry (IHC)

Product Details

Immunogen:	PNPLA3 antibody was raised using the C terminal of PNPLA3 corresponding to a region with amino acids CSPKGCPAETKAEATPRSilRSSLNFFLGnkVPAGAEGLSTFPsfSLEKS
Specificity:	PNPLA3 antibody was raised against the C terminal of PNPLA3
Purification:	Affinity purified

Target Details

Target:	PNPLA3
Alternative Name:	PNPLA3 (PNPLA3 Products)
Background:	PNPLA3 is a triacylglycerol lipase that mediates triacylglycerol hydrolysis in adipocytes. The protein, which appears to be membrane bound, may be involved in the balance of energy usage/storage in adipocytes.

Target Details

Molecular Weight: 53 kDa (MW of target protein)

Application Details

Application Notes: WB: 1 µg/mL, IHC: 4-8 µg/mL
Optimal conditions should be determined by the investigator.

Comment: PNPLA3 Blocking Peptide, catalog no. 33R-1814, is also available for use as a blocking control in assays to test for specificity of this PNPLA3 antibody

Restrictions: For Research Use only

Handling

Format: Lyophilized

Reconstitution: Lyophilized powder. Add distilled water for a 1 mg/mL concentration of PNPLA3 antibody in PBS

Concentration: Lot specific

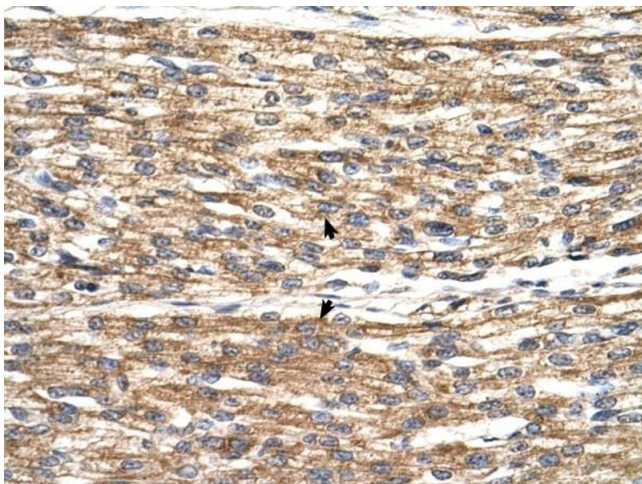
Buffer: PBS

Handling Advice: Avoid repeated freeze/thaw cycles.
Dilute only prior to immediate use.

Storage: 4 °C/-20 °C

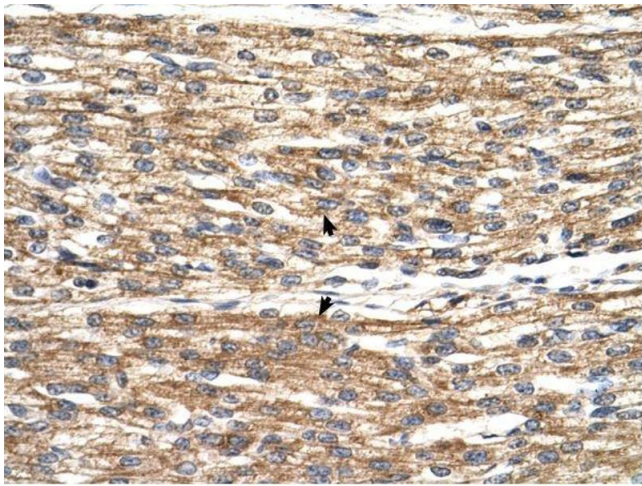
Storage Comment: Store at 2-8 °C for short periods. For longer periods of storage, store at -20 °C.

Images



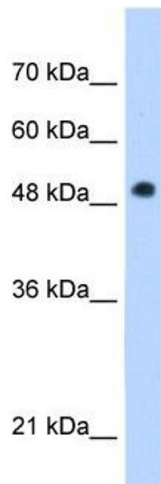
Immunohistochemistry

Image 1. PNPLA3 antibody was used for immunohistochemistry at a concentration of 4-8 ug/ml to stain Myocardial cells (arrows) in Human Heart. Magnification is at 400X



Immunohistochemistry

Image 2. PNPLA3 antibody was used for immunohistochemistry at a concentration of 4-8 ug/ml. Magnification is at 400X



Western Blotting

Image 3. PNPLA3 antibody used at 1 ug/ml to detect target protein.