

Datasheet for ABIN630956

anti-PTGDS antibody (N-Term)[Go to Product page](#)**1** Image

Overview

Quantity:	100 µL
Target:	PTGDS
Binding Specificity:	N-Term
Reactivity:	Human, Mouse, Rat
Host:	Rabbit
Clonality:	Polyclonal
Conjugate:	This PTGDS antibody is un-conjugated
Application:	Western Blotting (WB)

Product Details

Immunogen:	PGDS antibody was raised using the N terminal of PGDS corresponding to a region with amino acids EQADWPEIKSTLPFGKIPILEVDGLTLHQSLAIARYLTKNTDLAGNTEME
Specificity:	PGDS antibody was raised against the N terminal of PGDS
Purification:	Affinity purified

Target Details

Target:	PTGDS
Alternative Name:	PGDS (PTGDS Products)
Background:	PGDS is a sigma class glutathione-S-transferase family member. The enzyme catalyzes the conversion of PGH2 to PGD2 and plays a role in the production of prostanoids in the immune system and mast cells. The presence of this enzyme can be used to identify the differentiation

Target Details

stage of human megakaryocytes. Prostaglandin-D synthase is a sigma class glutathione-S-transferase family member. The enzyme catalyzes the conversion of PGH2 to PGD2 and plays a role in the production of prostanoids in the immune system and mast cells. The presence of this enzyme can be used to identify the differentiation stage of human megakaryocytes.

Molecular Weight: 23 kDa (MW of target protein)

Application Details

Application Notes: WB: 1 µg/mL
Optimal conditions should be determined by the investigator.

Comment: PGDS Blocking Peptide, catalog no. 33R-2657, is also available for use as a blocking control in assays to test for specificity of this PGDS antibody

Restrictions: For Research Use only

Handling

Format: Lyophilized

Reconstitution: Lyophilized powder. Add distilled water for a 1 mg/mL concentration of PGDS antibody in PBS

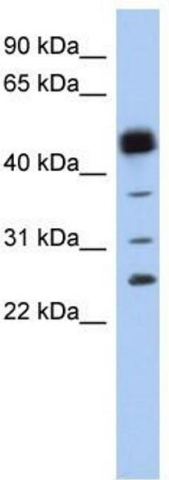
Concentration: Lot specific

Buffer: PBS

Handling Advice: Avoid repeated freeze/thaw cycles.
Dilute only prior to immediate use.

Storage: 4 °C/-20 °C

Storage Comment: Store at 2-8 °C for short periods. For longer periods of storage, store at -20 °C.



Western Blotting

Image 1. PGDS antibody used at 1 ug/ml to detect target protein.