

Datasheet for ABIN630957  
**anti-ACTRT2 antibody (C-Term)**



[Go to Product page](#)

1 Image

## Overview

Quantity:	100 µL
Target:	ACTRT2
Binding Specificity:	C-Term
Reactivity:	Human, Mouse, Rat
Host:	Rabbit
Clonality:	Polyclonal
Conjugate:	This ACTRT2 antibody is un-conjugated
Application:	Western Blotting (WB)

## Product Details

Immunogen:	ACTRT2 antibody was raised using the C terminal of ACTRT2 corresponding to a region with amino acids LDDRLLKELEQLASKDTPIKITAPPDRWFSTWIGASIVTSLSSFQKMWVT
Specificity:	ACTRT2 antibody was raised against the C terminal of ACTRT2
Purification:	Affinity purified

## Target Details

Target:	ACTRT2
Alternative Name:	ACTRT2 ( <a href="#">ACTRT2 Products</a> )
Background:	ACTRT2 belongs to the actin family. Studies have shown that this protein may be involved in cytoskeletal organization similar to other cytoplasmic actin-related protein (ARP) subfamily members. Antibody raised against the human protein has been used to detect the protein by

## Target Details

---

immunoblotting and immunofluorescence microscopy, demonstrating its specific synthesis in the testis, late in spermatid differentiation, and its localization in the calyx.

Molecular Weight: 42 kDa (MW of target protein)

## Application Details

---

Application Notes: WB: 1 µg/mL  
Optimal conditions should be determined by the investigator.

Comment: ACTRT2 Blocking Peptide, catalog no. 33R-4842, is also available for use as a blocking control in assays to test for specificity of this ACTRT2 antibody

Restrictions: For Research Use only

## Handling

---

Format: Lyophilized

Reconstitution: Lyophilized powder. Add distilled water for a 1 mg/mL concentration of ACTRT2 antibody in PBS

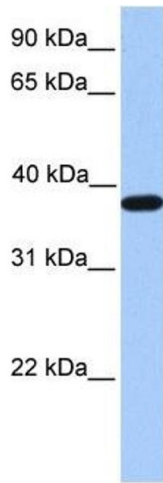
Concentration: Lot specific

Buffer: PBS

Handling Advice: Avoid repeated freeze/thaw cycles.  
Dilute only prior to immediate use.

Storage: 4 °C/-20 °C

Storage Comment: Store at 2-8 °C for short periods. For longer periods of storage, store at -20 °C.



### Western Blotting

**Image 1.** ACTRT2 antibody used at 1 ug/ml to detect target protein.