

Datasheet for ABIN630971 anti-PRODH2 antibody

2 Images



[Go to Product page](#)

Overview

Quantity:	100 µL
Target:	PRODH2
Reactivity:	Human, Dog
Host:	Rabbit
Clonality:	Polyclonal
Conjugate:	This PRODH2 antibody is un-conjugated
Application:	Western Blotting (WB), Immunohistochemistry (IHC)

Product Details

Immunogen:	PRODH2 antibody was raised using a synthetic peptide corresponding to a region with amino acids LGIPLDGTVCFGQLLGMCDHVSLALGQAGYVVYKSIPYGSLEEVIPYLIR
Purification:	Affinity purified

Target Details

Target:	PRODH2
Alternative Name:	PRODH2 (PRODH2 Products)
Background:	PRODH2 is similar to proline dehydrogenase (oxidase) 1, a mitochondrial enzyme which catalyzes the first step in proline catabolism. The function of this protein has not been determined.
Molecular Weight:	59 kDa (MW of target protein)

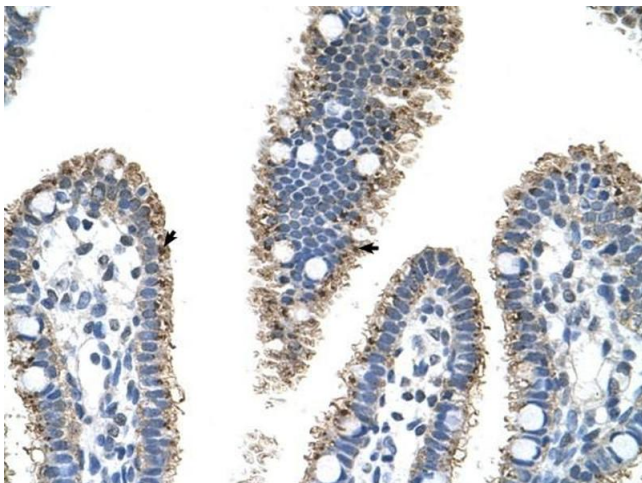
Application Details

Application Notes:	WB: 0.25 µg/mL, IHC: 4-8 µg/mL Optimal conditions should be determined by the investigator.
Comment:	PRODH2 Blocking Peptide, catalog no. 33R-4976, is also available for use as a blocking control in assays to test for specificity of this PRODH2 antibody
Restrictions:	For Research Use only

Handling

Format:	Lyophilized
Reconstitution:	Lyophilized powder. Add distilled water for a 1 mg/mL concentration of PRODH2 antibody in PBS
Concentration:	Lot specific
Buffer:	PBS
Handling Advice:	Avoid repeated freeze/thaw cycles.
Storage:	4 °C/-20 °C
Storage Comment:	Store at 2-8 °C for short periods. For longer periods of storage, store at -20 °C.

Images



Immunohistochemistry

Image 1. PRODH2 antibody was used for immunohistochemistry at a concentration of 4-8 µg/ml to stain Epithelial cells of intestinal villus (arrows) in Human Intestine. Magnification is at 400X



Western Blotting

Image 2. PRODH2 antibody used at 0.25 ug/ml to detect target protein.