

Datasheet for ABIN630975 **anti-GCDH antibody (N-Term)**



[Go to Product page](#)

1 Image

Overview

Quantity:	100 µL
Target:	GCDH
Binding Specificity:	N-Term
Reactivity:	Human, Mouse
Host:	Rabbit
Clonality:	Polyclonal
Conjugate:	This GCDH antibody is un-conjugated
Application:	Western Blotting (WB)

Product Details

Immunogen:	GCDH antibody was raised using the N terminal of GCDH corresponding to a region with amino acids SLVMHPIYAYGSEEQRQKYLPLAKGELLGCFGLTEPNSSGSDPSSMETRA
Specificity:	GCDH antibody was raised against the N terminal of GCDH
Purification:	Affinity purified

Target Details

Target:	GCDH
Alternative Name:	GCDH (GCDH Products)
Background:	GCDH belongs to the acyl-CoA dehydrogenase family. It catalyzes the oxidative decarboxylation of glutaryl-CoA to crotonyl-CoA and CO(2) in the degradative pathway of L-lysine, L-hydroxylysine, and L-tryptophan metabolism. It uses electron transfer flavoprotein as its

Target Details

electron acceptor. The enzyme exists in the mitochondrial matrix as a homotetramer of 45 kDa subunits.

Molecular Weight: 43 kDa (MW of target protein)

Application Details

Application Notes: WB: 1 µg/mL
Optimal conditions should be determined by the investigator.

Comment: GCDH Blocking Peptide, catalog no. 33R-8632, is also available for use as a blocking control in assays to test for specificity of this GCDH antibody

Restrictions: For Research Use only

Handling

Format: Lyophilized

Reconstitution: Lyophilized powder. Add distilled water for a 1 mg/mL concentration of GCDH antibody in PBS

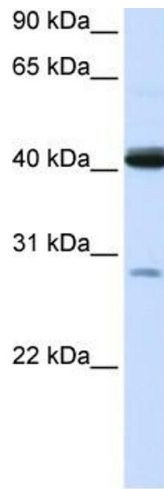
Concentration: Lot specific

Buffer: PBS

Handling Advice: Avoid repeated freeze/thaw cycles.
Dilute only prior to immediate use.

Storage: 4 °C/-20 °C

Storage Comment: Store at 2-8 °C for short periods. For longer periods of storage, store at -20 °C.



Western Blotting

Image 1. GCDH antibody used at 1 ug/ml to detect target protein.