

Datasheet for ABIN630981 **anti-WBP11 antibody (N-Term)**



[Go to Product page](#)

1 Image

Overview

Quantity:	100 µL
Target:	WBP11
Binding Specificity:	N-Term
Reactivity:	Human, Mouse, Rat
Host:	Rabbit
Clonality:	Polyclonal
Conjugate:	This WBP11 antibody is un-conjugated
Application:	Western Blotting (WB)

Product Details

Immunogen:	WBP11 antibody was raised using the N terminal of WBP11 corresponding to a region with amino acids GRRSTSSTKSGKFMNPTDQARKEARKRELKKNKKQRMMVRAAVLKMKDPK
Specificity:	WBP11 antibody was raised against the N terminal of WBP11
Purification:	Affinity purified

Target Details

Target:	WBP11
Alternative Name:	WBP11 (WBP11 Products)
Background:	WBP11 is a nuclear protein, which colocalizes with mRNA splicing factors and intermediate filament-containing perinuclear networks. WBP11 has 95% amino acid sequence identity to the mouse Wbp11 protein. It contains two proline-rich regions that bind to the WW domain of

Target Details

Npw38, a nuclear protein, and thus this protein is also called Npw38-binding protein NpwBP.
The Npw38-NpwBP complex may function as a component of an mRNA factory in the nucleus.

Molecular Weight: 70 kDa (MW of target protein)

Application Details

Application Notes: WB: 1 µg/mL
Optimal conditions should be determined by the investigator.

Comment: WBP11 Blocking Peptide, catalog no. 33R-3541, is also available for use as a blocking control in assays to test for specificity of this WBP11 antibody

Restrictions: For Research Use only

Handling

Format: Lyophilized

Reconstitution: Lyophilized powder. Add distilled water for a 1 mg/mL concentration of WBP11 antibody in PBS

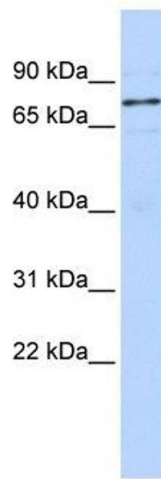
Concentration: Lot specific

Buffer: PBS

Handling Advice: Avoid repeated freeze/thaw cycles.
Dilute only prior to immediate use.

Storage: 4 °C/-20 °C

Storage Comment: Store at 2-8 °C for short periods. For longer periods of storage, store at -20 °C.



Western Blotting

Image 1. WBP11 antibody used at 1 ug/ml to detect target protein.