

Datasheet for ABIN630985
anti-MRPL39 antibody (N-Term)



[Go to Product page](#)

1 Image

Overview

Quantity:	100 µL
Target:	MRPL39
Binding Specificity:	N-Term
Reactivity:	Human
Host:	Rabbit
Clonality:	Polyclonal
Conjugate:	This MRPL39 antibody is un-conjugated
Application:	Western Blotting (WB)

Product Details

Immunogen:	MRPL39 antibody was raised using the N terminal of MRPL39 corresponding to a region with amino acids TELTEMRNDLFNKEKARQLSLTPRTEKIEVKHVGKTDPGTVFVMNKNIST
Specificity:	MRPL39 antibody was raised against the N terminal of MRPL39
Purification:	Affinity purified

Target Details

Target:	MRPL39
Alternative Name:	MRPL39 (MRPL39 Products)
Background:	Mitochondrial ribosomes (mitoribosomes) consist of a small 28S subunit and a large 39S subunit. MRPL39 is a 39S subunit protein. Mammalian mitochondrial ribosomal proteins are encoded by nuclear genes and help in protein synthesis within the mitochondrion.

Target Details

Molecular Weight: 39 kDa (MW of target protein)

Application Details

Application Notes: WB: 1 µg/mL
Optimal conditions should be determined by the investigator.

Comment: MRPL39 Blocking Peptide, catalog no. 33R-9047, is also available for use as a blocking control in assays to test for specificity of this MRPL39 antibody

Restrictions: For Research Use only

Handling

Format: Lyophilized

Reconstitution: Lyophilized powder. Add distilled water for a 1 mg/mL concentration of MRPL39 antibody in PBS

Concentration: Lot specific

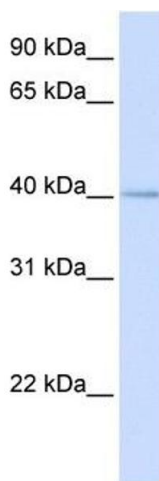
Buffer: PBS

Handling Advice: Avoid repeated freeze/thaw cycles.
Dilute only prior to immediate use.

Storage: 4 °C/-20 °C

Storage Comment: Store at 2-8 °C for short periods. For longer periods of storage, store at -20 °C.

Images



Western Blotting

Image 1. MRPL39 antibody used at 1 ug/ml to detect target protein.