

Datasheet for ABIN630995
anti-MRPL15 antibody (N-Term)



[Go to Product page](#)

1 Image

Overview

Quantity:	100 µL
Target:	MRPL15
Binding Specificity:	N-Term
Reactivity:	Human, Mouse, Rat
Host:	Rabbit
Clonality:	Polyclonal
Conjugate:	This MRPL15 antibody is un-conjugated
Application:	Western Blotting (WB)

Product Details

Immunogen:	MRPL15 antibody was raised using the N terminal of MRPL15 corresponding to a region with amino acids KPERRPRGRRRGRKCGRGHKGERQGRTRPRLGFEGGQTPFYIRIPKYGFN
Specificity:	MRPL15 antibody was raised against the N terminal of MRPL15
Purification:	Affinity purified

Target Details

Target:	MRPL15
Alternative Name:	MRPL15 (MRPL15 Products)
Background:	Mammalian mitochondrial ribosomal proteins are encoded by nuclear genes and help in protein synthesis within the mitochondrion. Mitochondrial ribosomes (mitoribosomes) consist of a small 28S subunit and a large 39S subunit. MRPL15 belongs to the ribosomal protein L15P

Target Details

family. It is a 39S subunit protein that belongs to the EcoL15 ribosomal protein family.

Molecular Weight: 33 kDa (MW of target protein)

Application Details

Application Notes: WB: 1 µg/mL
Optimal conditions should be determined by the investigator.

Comment: MRPL15 Blocking Peptide, catalog no. 33R-4583, is also available for use as a blocking control in assays to test for specificity of this MRPL15 antibody

Restrictions: For Research Use only

Handling

Format: Lyophilized

Reconstitution: Lyophilized powder. Add distilled water for a 1 mg/mL concentration of MRPL15 antibody in PBS

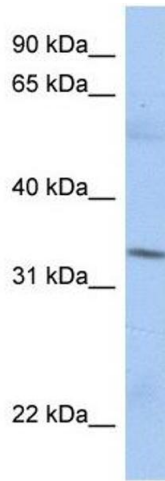
Concentration: Lot specific

Buffer: PBS

Handling Advice: Avoid repeated freeze/thaw cycles.
Dilute only prior to immediate use.

Storage: 4 °C/-20 °C

Storage Comment: Store at 2-8 °C for short periods. For longer periods of storage, store at -20 °C.



Western Blotting

Image 1. MRPL15 antibody used at 1 ug/ml to detect target protein.