

Datasheet for ABIN631015 **anti-LACTB antibody (C-Term)**



[Go to Product page](#)

1 Image

Overview

Quantity:	100 µL
Target:	LACTB
Binding Specificity:	C-Term
Reactivity:	Human, Mouse, Rat
Host:	Rabbit
Clonality:	Polyclonal
Conjugate:	This LACTB antibody is un-conjugated
Application:	Western Blotting (WB)

Product Details

Immunogen:	Beta Lactamase antibody was raised using the C terminal of LACTB corresponding to a region with amino acids TEMSWDKEGKYAMAWGVVERKQTYGSCRKQRHYASHTGGAVGASSVLLVL
Specificity:	Beta Lactamase antibody was raised against the C terminal of LACTB
Purification:	Affinity purified

Target Details

Target:	LACTB
Alternative Name:	beta Lactamase (LACTB Products)
Background:	LACTB belongs to the peptidase S12 family. LACTB is a protein from the large 39S subunit of the mitochondrial ribosome (mitoribosome). It has some sequence similarity to prokaryotic beta-lactamases but most of the residues that are responsible for the beta-lactamase activity

Target Details

are not conserved between the two proteins.

Molecular Weight: 61 kDa (MW of target protein)

Application Details

Application Notes: WB: 0.5 µg/mL

Optimal conditions should be determined by the investigator.

Comment: Beta Lactamase Blocking Peptide, catalog no. 33R-9050, is also available for use as a blocking control in assays to test for specificity of this Beta Lactamase antibody

Restrictions: For Research Use only

Handling

Format: Lyophilized

Reconstitution: Lyophilized powder. Add distilled water for a 1 mg/mL concentration of LACTB antibody in PBS

Concentration: Lot specific

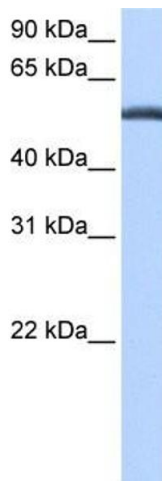
Buffer: PBS

Handling Advice: Avoid repeated freeze/thaw cycles.
Dilute only prior to immediate use.

Storage: 4 °C/-20 °C

Storage Comment: Store at 2-8 °C for short periods. For longer periods of storage, store at -20 °C.

Images



Western Blotting

Image 1. Beta Lactamase antibody used at 0.5 µg/ml to detect target protein.