

## Datasheet for ABIN631016 **anti-MRPL10 antibody (N-Term)**



[Go to Product page](#)

### 1 Image

#### Overview

Quantity:	100 µL
Target:	MRPL10
Binding Specificity:	N-Term
Reactivity:	Human
Host:	Rabbit
Clonality:	Polyclonal
Conjugate:	This MRPL10 antibody is un-conjugated
Application:	Western Blotting (WB)

#### Product Details

Immunogen:	MRPL10 antibody was raised using the N terminal of MRPL10 corresponding to a region with amino acids HRRVMHFQRQKLMVTEYIPPKPAIHPSCLPSPSPSPQEEIGLIRLLRRE
Specificity:	MRPL10 antibody was raised against the N terminal of MRPL10
Purification:	Affinity purified

#### Target Details

Target:	MRPL10
Alternative Name:	MRPL10 ( <a href="#">MRPL10 Products</a> )
Background:	Mammalian mitochondrial ribosomal proteins are encoded by nuclear genes and help in protein synthesis within the mitochondrion. Mitochondrial ribosomes (mitoribosomes) consist of a small 28S subunit and a large 39S subunit. They have an estimated 75% protein to rRNA

## Target Details

---

composition compared to prokaryotic ribosomes, where this ratio is reversed. Another difference between mammalian mitoribosomes and prokaryotic ribosomes is that the latter contain a 5S rRNA. Among different species, the proteins comprising the mitoribosome differ greatly in sequence, and sometimes in biochemical properties, which prevents easy recognition by sequence homology. This gene encodes a 39S subunit protein. A pseudogene corresponding to this gene is found on chromosome 5q.

---

Molecular Weight: 29 kDa (MW of target protein)

## Application Details

---

Application Notes: WB: 1 µg/mL  
Optimal conditions should be determined by the investigator.

---

Comment: MRPL10 Blocking Peptide, catalog no. 33R-3847, is also available for use as a blocking control in assays to test for specificity of this MRPL10 antibody

---

Restrictions: For Research Use only

## Handling

---

Format: Lyophilized

---

Reconstitution: Lyophilized powder. Add distilled water for a 1 mg/mL concentration of MRPL10 antibody in PBS

---

Concentration: Lot specific

---

Buffer: PBS

---

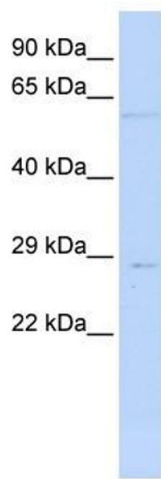
Handling Advice: Avoid repeated freeze/thaw cycles.  
Dilute only prior to immediate use.

---

Storage: 4 °C/-20 °C

---

Storage Comment: Store at 2-8 °C for short periods. For longer periods of storage, store at -20 °C.



### Western Blotting

**Image 1.** MRPL10 antibody used at 1 ug/ml to detect target protein.