

Datasheet for ABIN631022

anti-TCL1A antibody (N-Term)[Go to Product page](#)**1** Image

Overview

Quantity:	100 µL
Target:	TCL1A
Binding Specificity:	N-Term
Reactivity:	Human
Host:	Rabbit
Clonality:	Polyclonal
Conjugate:	This TCL1A antibody is un-conjugated
Application:	Western Blotting (WB)

Product Details

Immunogen:	TCL1 A antibody was raised using the N terminal of TCL1 corresponding to a region with amino acids MAECPTLGEAVTDHPDRLWAWKEFVYLDEKQHAWLPLTIEIKDRLQLRVL
Specificity:	TCL1 A antibody was raised against the N terminal of TCL1
Purification:	Affinity purified

Target Details

Target:	TCL1A
Alternative Name:	TCL1A (TCL1A Products)
Background:	TCL1A can enhance the phosphorylation and activation of AKT1, AKT2 and AKT3, promote nuclear translocation of AKT1, enhance cell proliferation, stabilize mitochondrial membrane potential and promote cell survival.

Target Details

Molecular Weight: 13 kDa (MW of target protein)

Pathways: [Stem Cell Maintenance](#)

Application Details

Application Notes: WB: 1 µg/mL
Optimal conditions should be determined by the investigator.

Comment: TCL1A Blocking Peptide, catalog no. 33R-5631, is also available for use as a blocking control in assays to test for specificity of this TCL1A antibody

Restrictions: For Research Use only

Handling

Format: Lyophilized

Reconstitution: Lyophilized powder. Add distilled water for a 1 mg/mL concentration of TCL0 antibody in PBS

Concentration: Lot specific

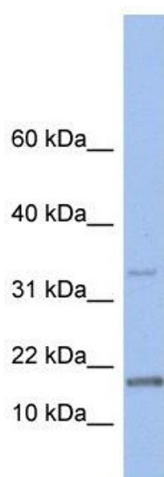
Buffer: PBS

Handling Advice: Avoid repeated freeze/thaw cycles.
Dilute only prior to immediate use.

Storage: 4 °C/-20 °C

Storage Comment: Store at 2-8 °C for short periods. For longer periods of storage, store at -20 °C.

Images



Western Blotting

Image 1. TCL1A antibody used at 1 ug/ml to detect target protein.