

Datasheet for ABIN631023 **anti-MTX2 antibody (N-Term)**



[Go to Product page](#)

1 Image

Overview

| | |
|----------------------|-------------------------------------|
| Quantity: | 100 µL |
| Target: | MTX2 |
| Binding Specificity: | N-Term |
| Reactivity: | Human |
| Host: | Rabbit |
| Clonality: | Polyclonal |
| Conjugate: | This MTX2 antibody is un-conjugated |
| Application: | Western Blotting (WB) |

Product Details

| | |
|---------------|--|
| Immunogen: | Metaxin 2 antibody was raised using the N terminal of MTX2 corresponding to a region with amino acids YIAAEPWPENATLYQQLKGEQILLSDNAASLAVQAFLQMCNLPPIKVVCR |
| Specificity: | Metaxin 2 antibody was raised against the N terminal of MTX2 |
| Purification: | Affinity purified |

Target Details

| | |
|-------------------|--|
| Target: | MTX2 |
| Alternative Name: | Metaxin 2 (MTX2 Products) |
| Background: | MTX2 is highly similar to the metaxin 2 protein from mouse, which has been shown to interact with the mitochondrial membrane protein metaxin 1. Because of this similarity, it is thought that the encoded protein is peripherally associated with the cytosolic face of the outer mitochondrial |

Target Details

membrane and be involved in the import of proteins into the mitochondrion.

Molecular Weight: 29 kDa (MW of target protein)

Application Details

Application Notes: WB: 1 µg/mL

Optimal conditions should be determined by the investigator.

Comment: Metaxin 2 Blocking Peptide, catalog no. 33R-10130, is also available for use as a blocking control in assays to test for specificity of this Metaxin 2 antibody

Restrictions: For Research Use only

Handling

Format: Lyophilized

Reconstitution: Lyophilized powder. Add distilled water for a 1 mg/mL concentration of MTX2 antibody in PBS

Concentration: Lot specific

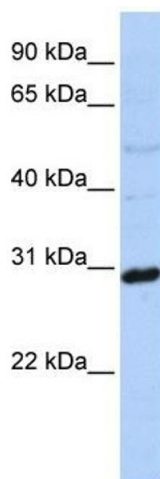
Buffer: PBS

Handling Advice: Avoid repeated freeze/thaw cycles.
Dilute only prior to immediate use.

Storage: 4 °C/-20 °C

Storage Comment: Store at 2-8 °C for short periods. For longer periods of storage, store at -20 °C.

Images



Western Blotting

Image 1. Metaxin 2 antibody used at 1 µg/ml to detect target protein.