

Datasheet for ABIN631031  
**anti-ETF B antibody (C-Term)**



[Go to Product page](#)

1 Image

## Overview

Quantity:	100 µL
Target:	ETF B
Binding Specificity:	C-Term
Reactivity:	Human, Mouse, Rat
Host:	Rabbit
Clonality:	Polyclonal
Conjugate:	This ETF B antibody is un-conjugated
Application:	Western Blotting (WB)

## Product Details

Immunogen:	ETF B antibody was raised using the C terminal of ETF B corresponding to a region with amino acids TADLRLNEPRYATLPNIMKAKKKKIEVIKPGDLGVDLTSKLSVISVEDPP
Specificity:	ETF B antibody was raised against the C terminal of ETF B
Purification:	Affinity purified

## Target Details

Target:	ETF B
Alternative Name:	ETF B ( <a href="#">ETF B Products</a> )
Background:	ETF B is the electron-transfer-flavoprotein, beta polypeptide, which shuttles electrons between primary flavoprotein dehydrogenases involved in mitochondrial fatty acid and amino acid catabolism and the membrane-bound electron transfer flavoprotein ubiquinone

## Target Details

oxidoreductase. The gene deficiencies have been implicated in type II glutaricaciduria.

Molecular Weight: 28 kDa (MW of target protein)

## Application Details

Application Notes: WB: 1 µg/mL

Optimal conditions should be determined by the investigator.

Comment: ETFB Blocking Peptide, catalog no. 33R-8967, is also available for use as a blocking control in assays to test for specificity of this ETFB antibody

Restrictions: For Research Use only

## Handling

Format: Lyophilized

Reconstitution: Lyophilized powder. Add distilled water for a 1 mg/mL concentration of ETFB antibody in PBS

Concentration: Lot specific

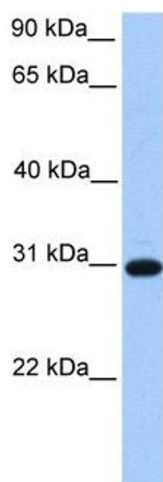
Buffer: PBS

Handling Advice: Avoid repeated freeze/thaw cycles.  
Dilute only prior to immediate use.

Storage: 4 °C/-20 °C

Storage Comment: Store at 2-8 °C for short periods. For longer periods of storage, store at -20 °C.

## Images



### Western Blotting

**Image 1.** ETFB antibody used at 1 ug/ml to detect target protein.