

Datasheet for ABIN631032 **anti-P5CS antibody (N-Term)**



[Go to Product page](#)

1 Image

Overview

| | |
|----------------------|-------------------------------------|
| Quantity: | 100 µL |
| Target: | P5CS (ALDH18A1) |
| Binding Specificity: | N-Term |
| Reactivity: | Human |
| Host: | Rabbit |
| Clonality: | Polyclonal |
| Conjugate: | This P5CS antibody is un-conjugated |
| Application: | Western Blotting (WB) |

Product Details

| | |
|---------------|--|
| Immunogen: | ALDH18 A1 antibody was raised using the N terminal of ALDH18 1 corresponding to a region with amino acids SVIRHVRSWSNIPFITVPLSRTHGKSFAHRSELKHAKRIVVKLGSAVVTR |
| Specificity: | ALDH18 A1 antibody was raised against the N terminal of ALDH18 1 |
| Purification: | Affinity purified |

Target Details

| | |
|-------------------|---|
| Target: | P5CS (ALDH18A1) |
| Alternative Name: | ALDH18A1 (ALDH18A1 Products) |
| Background: | This gene is a member of the aldehyde dehydrogenase family and encodes a bifunctional ATP- and NADPH-dependent mitochondrial enzyme with both gamma-glutamyl kinase and gamma-glutamyl phosphate reductase activities. The encoded protein catalyzes the reduction of |

Target Details

glutamate to delta1-pyrroline-5-carboxylate, a critical step in the de novo biosynthesis of proline, ornithine and arginine. Mutations in this gene lead to hyperammonemia, hypoorithinemia, hypocitrullinemia, hypoargininemia and hypoprolinemia and may be associated with neurodegeneration, cataracts and connective tissue diseases.

Molecular Weight: 87 kDa (MW of target protein)

Application Details

Application Notes: WB: 1 µg/mL
Optimal conditions should be determined by the investigator.

Comment: ALDH18A1 Blocking Peptide, catalog no. 33R-8914, is also available for use as a blocking control in assays to test for specificity of this ALDH18A1 antibody

Restrictions: For Research Use only

Handling

Format: Lyophilized

Reconstitution: Lyophilized powder. Add distilled water for a 1 mg/mL concentration of ALDH10 1 antibody in PBS

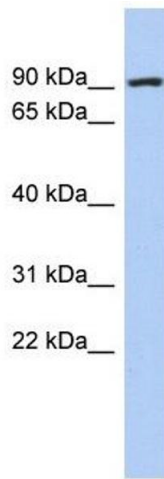
Concentration: Lot specific

Buffer: PBS

Handling Advice: Avoid repeated freeze/thaw cycles.
Dilute only prior to immediate use.

Storage: 4 °C/-20 °C

Storage Comment: Store at 2-8 °C for short periods. For longer periods of storage, store at -20 °C.



Western Blotting

Image 1. ALDH18A1 antibody used at 1 ug/ml to detect target protein.