

Datasheet for ABIN631034  
**anti-MMADHC antibody (Middle Region)**



[Go to Product page](#)

1 Image

## Overview

Quantity:	100 µL
Target:	MMADHC
Binding Specificity:	Middle Region
Reactivity:	Human, Mouse, Rat
Host:	Rabbit
Clonality:	Polyclonal
Conjugate:	This MMADHC antibody is un-conjugated
Application:	Western Blotting (WB)

## Product Details

Immunogen:	C2 ORF25 antibody was raised using the middle region of C2 rf25 corresponding to a region with amino acids RAEGYWADFIDPSSGLAFFGPYTNNTLFETDERYRHLGFSVDDLGCCKVI
Specificity:	C2 ORF25 antibody was raised against the middle region of C2 rf25
Purification:	Affinity purified

## Target Details

Target:	MMADHC
Alternative Name:	C2ORF25 ( <a href="#">MMADHC Products</a> )
Background:	Vitamin B12 (cobalamin) is an essential cofactor in several metabolic pathways. Intracellular conversion of cobalamin to adenosylcobalamin in mitochondria and to methylcobalamin in cytoplasm is necessary for homeostasis of methylmalonic acid and homocysteine. C2ORF25

## Target Details

---

encodes a protein involved in an early step of cobalamin metabolism.

Molecular Weight: 33 kDa (MW of target protein)

## Application Details

---

Application Notes: WB: 1 µg/mL  
Optimal conditions should be determined by the investigator.

Comment: C2ORF25 Blocking Peptide, catalog no. 33R-7803, is also available for use as a blocking control in assays to test for specificity of this C2ORF25 antibody

Restrictions: For Research Use only

## Handling

---

Format: Lyophilized

Reconstitution: Lyophilized powder. Add distilled water for a 1 mg/mL concentration of C0 RF25 antibody in PBS

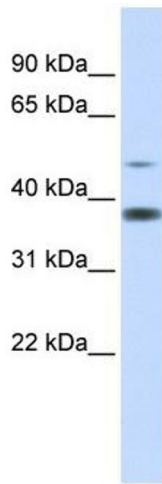
Concentration: Lot specific

Buffer: PBS

Handling Advice: Avoid repeated freeze/thaw cycles.  
Dilute only prior to immediate use.

Storage: 4 °C/-20 °C

Storage Comment: Store at 2-8 °C for short periods. For longer periods of storage, store at -20 °C.



### Western Blotting

**Image 1.** C2ORF25 antibody used at 1 ug/ml to detect target protein.