

Datasheet for ABIN631035 **anti-TRMU antibody (C-Term)**



[Go to Product page](#)

1 Image

Overview

Quantity:	100 µL
Target:	TRMU
Binding Specificity:	C-Term
Reactivity:	Human
Host:	Rabbit
Clonality:	Polyclonal
Conjugate:	This TRMU antibody is un-conjugated
Application:	Western Blotting (WB)

Product Details

Immunogen:	TRMU antibody was raised using the C terminal of TRMU corresponding to a region with amino acids ALATGQFAVFYKGDDECLGSGKILRLGPSAYTLQKGQRRAGMATESPSDSP
Specificity:	TRMU antibody was raised against the C terminal of TRMU
Purification:	Affinity purified

Target Details

Target:	TRMU
Alternative Name:	TRMU (TRMU Products)
Background:	TRMU is a member of the trmU family. It is a mitochondria-specific tRNA-modifying enzyme that is required for the 2-thio modification of 5-taurinomethyl-2-thiouridine tRNA-Lys on the wobble position of the anticodon.

Target Details

Molecular Weight: 48 kDa (MW of target protein)

Application Details

Application Notes: WB: 1 µg/mL
Optimal conditions should be determined by the investigator.

Comment: TRMU Blocking Peptide, catalog no. 33R-1321, is also available for use as a blocking control in assays to test for specificity of this TRMU antibody

Restrictions: For Research Use only

Handling

Format: Lyophilized

Reconstitution: Lyophilized powder. Add distilled water for a 1 mg/mL concentration of TRMU antibody in PBS

Concentration: Lot specific

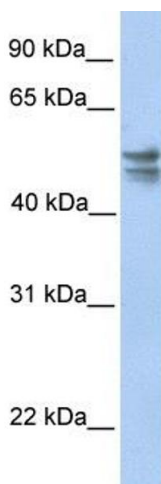
Buffer: PBS

Handling Advice: Avoid repeated freeze/thaw cycles.
Dilute only prior to immediate use.

Storage: 4 °C/-20 °C

Storage Comment: Store at 2-8 °C for short periods. For longer periods of storage, store at -20 °C.

Images



Western Blotting

Image 1. TRMU antibody used at 1 ug/ml to detect target protein.