

Datasheet for ABIN631054 **anti-ALAS2 antibody (N-Term)**



[Go to Product page](#)

1 Image

Overview

Quantity:	100 µL
Target:	ALAS2
Binding Specificity:	N-Term
Reactivity:	Human, Mouse
Host:	Rabbit
Clonality:	Polyclonal
Conjugate:	This ALAS2 antibody is un-conjugated
Application:	Western Blotting (WB)

Product Details

Immunogen:	ALAS2 antibody was raised using the N terminal of ALAS2 corresponding to a region with amino acids CPILATQGPNCSQIHLKATKAGGDSPSWAKGHCPFMLSELQDGKSKIVQK
Specificity:	ALAS2 antibody was raised against the N terminal of ALAS2
Purification:	Affinity purified

Target Details

Target:	ALAS2
Alternative Name:	ALAS2 (ALAS2 Products)
Background:	ALAS2 specifies an erythroid-specific mitochondrially located enzyme. The protein catalyzes the first step in the heme biosynthetic pathway. Defects in its gene cause X-linked pyridoxine-responsive sideroblastic anemia. Alternatively spliced transcript variants encoding different

Target Details

isoforms have been identified.

Molecular Weight: 60 kDa (MW of target protein)

Pathways: [Transition Metal Ion Homeostasis](#)

Application Details

Application Notes: WB: 1 µg/mL

Optimal conditions should be determined by the investigator.

Comment: ALAS2 Blocking Peptide, catalog no. 33R-1765, is also available for use as a blocking control in assays to test for specificity of this ALAS2 antibody

Restrictions: For Research Use only

Handling

Format: Lyophilized

Reconstitution: Lyophilized powder. Add distilled water for a 1 mg/mL concentration of ALAS2 antibody in PBS

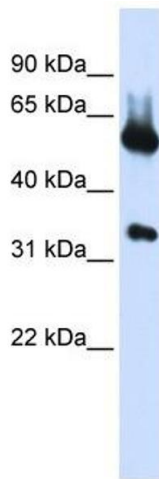
Concentration: Lot specific

Buffer: PBS

Handling Advice: Avoid repeated freeze/thaw cycles.
Dilute only prior to immediate use.

Storage: 4 °C/-20 °C

Storage Comment: Store at 2-8 °C for short periods. For longer periods of storage, store at -20 °C.



Western Blotting

Image 1. ALAS2 antibody used at 1 ug/ml to detect target protein.