

Datasheet for ABIN631067
anti-Catenin antibody



[Go to Product page](#)

1 Image

Overview

| | |
|--------------|--|
| Quantity: | 100 µL |
| Target: | Catenin |
| Reactivity: | Human, Mouse, Rat |
| Host: | Rabbit |
| Clonality: | Polyclonal |
| Conjugate: | This Catenin antibody is un-conjugated |
| Application: | Western Blotting (WB) |

Product Details

| | |
|---------------|--|
| Immunogen: | Catenin antibody was raised using a synthetic peptide corresponding to a region with amino acids YPPDGYSRHYEDGYPGGSDNYGSLSRVTRIEERYRPSMEGYRAPSQRQDVY |
| Purification: | Affinity purified |

Target Details

| | |
|-------------------|---|
| Target: | Catenin |
| Abstract: | Catenin Products |
| Background: | This gene encodes a member of the Armadillo protein family, which function in adhesion between cells and signal transduction. Multiple translation initiation codons and alternative splicing result in many different isoforms being translated. |
| Molecular Weight: | 93 kDa (MW of target protein) |

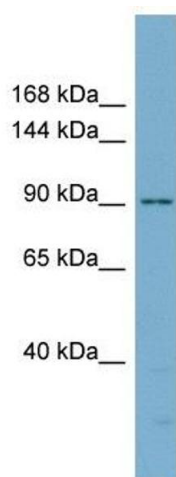
Application Details

| | |
|--------------------|---|
| Application Notes: | WB: 1 µg/mL Optimal conditions should be determined by the investigator. |
| Comment: | Catenin Blocking Peptide, catalog no. 33R-10205, is also available for use as a blocking control in assays to test for specificity of this Catenin antibody |
| Restrictions: | For Research Use only |

Handling

| | |
|------------------|---|
| Format: | Lyophilized |
| Reconstitution: | Lyophilized powder. Add distilled water for a 1 mg/mL concentration of CTNND1 antibody in PBS |
| Concentration: | Lot specific |
| Buffer: | PBS |
| Handling Advice: | Avoid repeated freeze/thaw cycles. |
| Storage: | 4 °C/-20 °C |
| Storage Comment: | Store at 2-8 °C for short periods. For longer periods of storage, store at -20 °C. |

Images



Western Blotting

Image 1. Catenin antibody used at 1 ug/ml to detect target protein.