

Datasheet for ABIN631071
anti-MTRF1L antibody (N-Term)



[Go to Product page](#)

1 Image

Overview

Quantity:	100 µL
Target:	MTRF1L
Binding Specificity:	N-Term
Reactivity:	Human
Host:	Rabbit
Clonality:	Polyclonal
Conjugate:	This MTRF1L antibody is un-conjugated
Application:	Western Blotting (WB)

Product Details

Immunogen:	MTRF1 L antibody was raised using the N terminal of MTRF1 corresponding to a region with amino acids ELFTRGGPLRFLERQAGSEAHKVVRRPELLAVIKLLNEKERELRETEHL
Specificity:	MTRF1 L antibody was raised against the N terminal of MTRF1
Purification:	Affinity purified

Target Details

Target:	MTRF1L
Alternative Name:	MTRF1L (MTRF1L Products)
Background:	MTRF1L is a mitochondrial peptide chain release factor that directs the termination of translation in response to the peptide chain termination codons UAA and UAG.

Target Details

Molecular Weight: 30 kDa (MW of target protein)

Application Details

Application Notes: WB: 1 µg/mL
Optimal conditions should be determined by the investigator.

Comment: MTRF1L Blocking Peptide, catalog no. 33R-2544, is also available for use as a blocking control in assays to test for specificity of this MTRF1L antibody

Restrictions: For Research Use only

Handling

Format: Lyophilized

Reconstitution: Lyophilized powder. Add distilled water for a 1 mg/mL concentration of MTRF0 antibody in PBS

Concentration: Lot specific

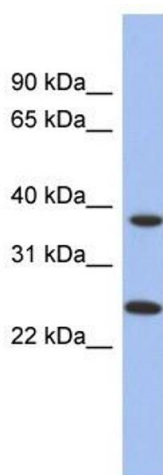
Buffer: PBS

Handling Advice: Avoid repeated freeze/thaw cycles.
Dilute only prior to immediate use.

Storage: 4 °C/-20 °C

Storage Comment: Store at 2-8 °C for short periods. For longer periods of storage, store at -20 °C.

Images



Western Blotting

Image 1. MTRF1L antibody used at 1 ug/ml to detect target protein.