

Datasheet for ABIN631072
anti-DBT antibody (N-Term)



[Go to Product page](#)

3 Images

Overview

Quantity:	100 µL
Target:	DBT
Binding Specificity:	N-Term
Reactivity:	Human, Mouse, Rat
Host:	Rabbit
Clonality:	Polyclonal
Conjugate:	This DBT antibody is un-conjugated
Application:	Western Blotting (WB)

Product Details

Immunogen:	DBT antibody was raised using the N terminal of DBT corresponding to a region with amino acids NYVCFGGYPSFKYSHPHHFLKTTAALRGQVVQFKLSDIGEGIREVTVKEW
Specificity:	DBT antibody was raised against the N terminal of DBT
Purification:	Affinity purified

Target Details

Target:	DBT
Alternative Name:	DBT (DBT Products)
Target Type:	Viral Protein
Background:	The branched-chain alpha-keto dehydrogenase complex catalyzes the overall conversion of

Target Details

alpha-keto acids to acyl-CoA and CO₂. It contains multiple copies of three enzymatic components: branched-chain alpha-keto acid decarboxylase (E1), lipoamide acyltransferase (E2) and lipoamide dehydrogenase (E3).

Molecular Weight: 46 kDa (MW of target protein)

Application Details

Application Notes: WB: 1 µg/mL
Optimal conditions should be determined by the investigator.

Comment: DBT Blocking Peptide, catalog no. 33R-6946, is also available for use as a blocking control in assays to test for specificity of this DBT antibody

Restrictions: For Research Use only

Handling

Format: Lyophilized

Reconstitution: Lyophilized powder. Add distilled water for a 1 mg/mL concentration of DBT antibody in PBS

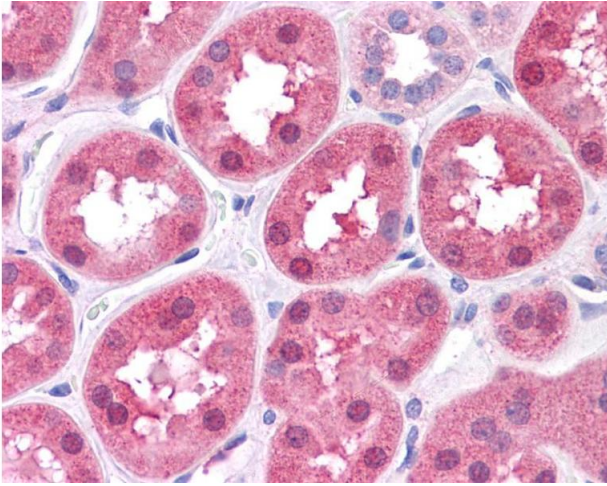
Concentration: Lot specific

Buffer: PBS

Handling Advice: Avoid repeated freeze/thaw cycles.
Dilute only prior to immediate use.

Storage: 4 °C/-20 °C

Storage Comment: Store at 2-8 °C for short periods. For longer periods of storage, store at -20 °C.



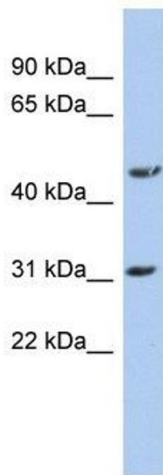
Immunohistochemistry

Image 1. DBT antibody was used for immunohistochemistry at a concentration of 4-8 ug/ml. Magnification is at 400X



Immunohistochemistry

Image 2. DBT antibody was used for immunohistochemistry at a concentration of 4-8 ug/ml. Magnification is at 400X



Western Blotting

Image 3. DBT antibody used at 1 ug/ml to detect target protein.