

Datasheet for ABIN631076
anti-DLAT antibody (C-Term)



[Go to Product page](#)

1 Image

Overview

| | |
|----------------------|-------------------------------------|
| Quantity: | 100 µL |
| Target: | DLAT |
| Binding Specificity: | C-Term |
| Reactivity: | Human, Mouse, Rat, C. elegans |
| Host: | Rabbit |
| Clonality: | Polyclonal |
| Conjugate: | This DLAT antibody is un-conjugated |
| Application: | Western Blotting (WB) |

Product Details

| | |
|---------------|---|
| Immunogen: | DLAT antibody was raised using the C terminal of DLAT corresponding to a region with amino acids DVVSLATKAREGKLQPHEFQGGTFTISNLGMFGIKNFSAIINPPQACILA |
| Specificity: | DLAT antibody was raised against the C terminal of DLAT |
| Purification: | Affinity purified |

Target Details

| | |
|-------------------|--|
| Target: | DLAT |
| Alternative Name: | DLAT (DLAT Products) |
| Background: | DLAT is dihydrolipoamide acetyltransferase, the E2 subunit of the mammalian pyruvate dehydrogenase complex of the inner mitochondrial membrane. Patients with primary biliary cirrhosis show autoantibodies to DLAT. |

Target Details

Molecular Weight: 69 kDa (MW of target protein)

Application Details

Application Notes: WB: 1 µg/mL
Optimal conditions should be determined by the investigator.

Comment: DLAT Blocking Peptide, catalog no. 33R-2227, is also available for use as a blocking control in assays to test for specificity of this DLAT antibody

Restrictions: For Research Use only

Handling

Format: Lyophilized

Reconstitution: Lyophilized powder. Add distilled water for a 1 mg/mL concentration of DLAT antibody in PBS

Concentration: Lot specific

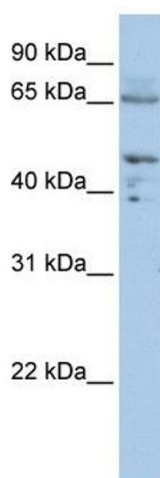
Buffer: PBS

Handling Advice: Avoid repeated freeze/thaw cycles.
Dilute only prior to immediate use.

Storage: 4 °C/-20 °C

Storage Comment: Store at 2-8 °C for short periods. For longer periods of storage, store at -20 °C.

Images



Western Blotting

Image 1. DLAT antibody used at 1 ug/ml to detect target protein.