

Datasheet for ABIN631098  
**anti-GLYATL2 antibody (Middle Region)**



[Go to Product page](#)

1 Image

## Overview

Quantity:	100 µL
Target:	GLYATL2
Binding Specificity:	Middle Region
Reactivity:	Human
Host:	Rabbit
Clonality:	Polyclonal
Conjugate:	This GLYATL2 antibody is un-conjugated
Application:	Western Blotting (WB)

## Product Details

Immunogen:	GLYATL2 antibody was raised using the middle region of GLYATL2 corresponding to a region with amino acids LDEAIRKVATSKSVQVDYMKILFIPELPKHKHTSSNDKMELFEVDDDNK
Specificity:	GLYATL2 antibody was raised against the middle region of GLYATL2
Purification:	Affinity purified

## Target Details

Target:	GLYATL2
Alternative Name:	GLYATL2 ( <a href="#">GLYATL2 Products</a> )
Background:	GLYATL2 belongs to the glycine N-acyltransferase family. GLYATL2 is a mitochondrial acyltransferase which transfers the acyl group to the N-terminus of glycine. It can conjugate a multitude of substrates to form a variety of N-acylglycines.

## Target Details

---

Molecular Weight: 34 kDa (MW of target protein)

## Application Details

---

Application Notes: WB: 1 µg/mL  
Optimal conditions should be determined by the investigator.

Comment: GLYATL2 Blocking Peptide, catalog no. 33R-4843, is also available for use as a blocking control in assays to test for specificity of this GLYATL2 antibody

Restrictions: For Research Use only

## Handling

---

Format: Lyophilized

Reconstitution: Lyophilized powder. Add distilled water for a 1 mg/mL concentration of GLYATL2 antibody in PBS

Concentration: Lot specific

Buffer: PBS

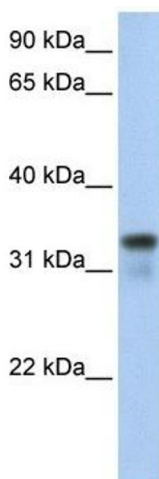
Handling Advice: Avoid repeated freeze/thaw cycles.  
Dilute only prior to immediate use.

Storage: 4 °C/-20 °C

Storage Comment: Store at 2-8 °C for short periods. For longer periods of storage, store at -20 °C.

## Images

---



### Western Blotting

**Image 1.** GLYATL2 antibody used at 1 µg/ml to detect target protein.