

## Datasheet for ABIN631112 **anti-EIF2C3 antibody (N-Term)**



[Go to Product page](#)

### 1 Image

#### Overview

Quantity:	100 µL
Target:	EIF2C3
Binding Specificity:	N-Term
Reactivity:	Human, Mouse, Rat
Host:	Rabbit
Clonality:	Polyclonal
Conjugate:	This EIF2C3 antibody is un-conjugated
Application:	Western Blotting (WB)

#### Product Details

Immunogen:	EIF2 C3 antibody was raised using the N terminal of EIF2 3 corresponding to a region with amino acids MCEVLDIHNIDEQPRPLTDSHRVKFTKEIKGLKVEVTHCGTMRRKYRVCN
Specificity:	EIF2 C3 antibody was raised against the N terminal of EIF2 3
Purification:	Affinity purified

#### Target Details

Target:	EIF2C3
Alternative Name:	EIF2C3 ( <a href="#">EIF2C3 Products</a> )
Background:	EIF2C3 is a member of the Argonaute family of proteins which play a role in RNA interference. The encoded protein is highly basic, contains a PAZ domain and a PIWI domain, and may play a role in short-interfering-RNA-mediated gene silencing.

## Target Details

---

Molecular Weight:	69 kDa (MW of target protein)
Pathways:	<a href="#">Fc-epsilon Receptor Signaling Pathway</a> , <a href="#">Regulatory RNA Pathways</a> , <a href="#">EGFR Signaling Pathway</a> , <a href="#">Neurotrophin Signaling Pathway</a>

## Application Details

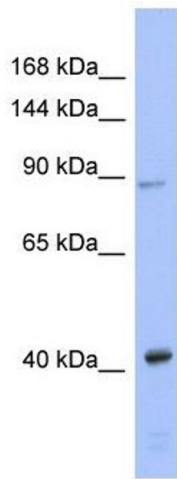
---

Application Notes:	WB: 1 µg/mL Optimal conditions should be determined by the investigator.
Comment:	EIF2C3 Blocking Peptide, catalog no. 33R-5810, is also available for use as a blocking control in assays to test for specificity of this EIF2C3 antibody
Restrictions:	For Research Use only

## Handling

---

Format:	Lyophilized
Reconstitution:	Lyophilized powder. Add distilled water for a 1 mg/mL concentration of EIF0 3 antibody in PBS
Concentration:	Lot specific
Buffer:	PBS
Handling Advice:	Avoid repeated freeze/thaw cycles. Dilute only prior to immediate use.
Storage:	4 °C/-20 °C
Storage Comment:	Store at 2-8 °C for short periods. For longer periods of storage, store at -20 °C.



### Western Blotting

**Image 1.** EIF2C3 antibody used at 1 ug/ml to detect target protein.