

Datasheet for ABIN631141 **anti-A2BP1 antibody (N-Term)**



[Go to Product page](#)

1 Image

Overview

Quantity:	100 µL
Target:	A2BP1
Binding Specificity:	N-Term
Reactivity:	Human, Mouse
Host:	Rabbit
Clonality:	Polyclonal
Conjugate:	This A2BP1 antibody is un-conjugated
Application:	Western Blotting (WB)

Product Details

Immunogen:	A2 BP1 antibody was raised using the N terminal of A2 P1 corresponding to a region with amino acids NCEREQLRGNQEAAAAPDTMAQPYASAQFAPPQNGIPA EYTAPHPHPE
Specificity:	A2 BP1 antibody was raised against the N terminal of A2 P1
Purification:	Affinity purified

Target Details

Target:	A2BP1
Alternative Name:	A2BP1 (A2BP1 Products)
Background:	Ataxin-2 binding protein 1(A2BP1) has an RNP motif that is highly conserved among RNA-binding proteins. This protein binds to the C-terminus of ataxin-2 and may contribute to the restricted pathology of spinocerebellar ataxia type 2 (SCA2). Ataxin-2 is the gene product of the

Target Details

SCA2 gene which causes familial neurodegenerative diseases. Ataxin-2 binding protein 1 and ataxin-2 are both localized in the trans-Golgi network. Several alternatively spliced transcript variants encoding different isoforms have been found for this gene. Additional transcript variants have been found but their full length nature has not been determined.

Molecular Weight: 40 kDa (MW of target protein)

Application Details

Application Notes: WB: 1 µg/mL
Optimal conditions should be determined by the investigator.

Comment: A2BP1 Blocking Peptide, catalog no. 33R-6652, is also available for use as a blocking control in assays to test for specificity of this A2BP1 antibody

Restrictions: For Research Use only

Handling

Format: Lyophilized

Reconstitution: Lyophilized powder. Add distilled water for a 1 mg/mL concentration of A0 P1 antibody in PBS

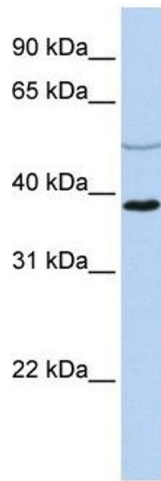
Concentration: Lot specific

Buffer: PBS

Handling Advice: Avoid repeated freeze/thaw cycles.
Dilute only prior to immediate use.

Storage: 4 °C/-20 °C

Storage Comment: Store at 2-8 °C for short periods. For longer periods of storage, store at -20 °C.



Western Blotting

Image 1. A2BP1 antibody used at 1 ug/ml to detect target protein.