

Datasheet for ABIN631147
anti-UBE3B antibody (Middle Region)



[Go to Product page](#)

1 Image

Overview

Quantity:	100 µL
Target:	UBE3B
Binding Specificity:	Middle Region
Reactivity:	Human, Mouse, Rat
Host:	Rabbit
Clonality:	Polyclonal
Conjugate:	This UBE3B antibody is un-conjugated
Application:	Western Blotting (WB)

Product Details

Immunogen:	UBE3 B antibody was raised using the middle region of UBE3 corresponding to a region with amino acids VDEAGIDQDGVFKEFLLEEIIKRVFDPALNLFKTTSGDERLYPSPTSYIHE
Specificity:	UBE3 B antibody was raised against the middle region of UBE3
Purification:	Affinity purified

Target Details

Target:	UBE3B
Alternative Name:	UBE3B (UBE3B Products)
Background:	The modification of proteins with ubiquitin is an important cellular mechanism for targeting abnormal or short-lived proteins for degradation. Ubiquitination involves at least three classes of enzymes: ubiquitin-activating enzymes, or E1s, ubiquitin-conjugating enzymes, or E2s, and

Target Details

ubiquitin-protein ligases, or E3s. UBE3B is a member of the E3 ubiquitin-conjugating enzyme family. UBE3B may interact with other proteins and play a role in stress response.

Molecular Weight: 123 kDa (MW of target protein)

Application Details

Application Notes: WB: 1 µg/mL
Optimal conditions should be determined by the investigator.

Comment: UBE3B Blocking Peptide, catalog no. 33R-9458, is also available for use as a blocking control in assays to test for specificity of this UBE3B antibody

Restrictions: For Research Use only

Handling

Format: Lyophilized

Reconstitution: Lyophilized powder. Add distilled water for a 1 mg/mL concentration of UBE0 antibody in PBS

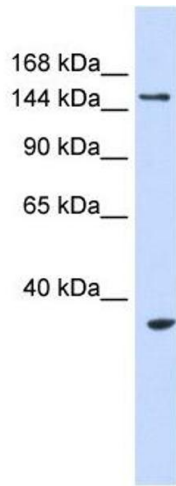
Concentration: Lot specific

Buffer: PBS

Handling Advice: Avoid repeated freeze/thaw cycles.
Dilute only prior to immediate use.

Storage: 4 °C/-20 °C

Storage Comment: Store at 2-8 °C for short periods. For longer periods of storage, store at -20 °C.



Western Blotting

Image 1. UBE3B antibody used at 1 ug/ml to detect target protein.