

Datasheet for ABIN631161 **anti-SPTLC2 antibody (N-Term)**



[Go to Product page](#)

1 Image

Overview

Quantity:	100 µL
Target:	SPTLC2
Binding Specificity:	N-Term
Reactivity:	Human, Mouse, Rat
Host:	Rabbit
Clonality:	Polyclonal
Conjugate:	This SPTLC2 antibody is un-conjugated
Application:	Western Blotting (WB)

Product Details

Immunogen:	SPTLC2 antibody was raised using the N terminal of SPTLC2 corresponding to a region with amino acids VLTYVGYGVLTFLFGYLRDFLRYWRIEKCHHATEREEQKDFVSLYQDFENF
Specificity:	SPTLC2 antibody was raised against the N terminal of SPTLC2
Purification:	Affinity purified

Target Details

Target:	SPTLC2
Alternative Name:	SPTLC2 (SPTLC2 Products)
Background:	SPTLC2 is a long chain base subunit of serine palmitoyltransferase. Serine palmitoyltransferase, which consists of two different subunits, is the key enzyme in sphingolipid biosynthesis. It catalyzes the pyridoxal-5-prime-phosphate-dependent condensation of L-serine

Target Details

and palmitoyl-CoA to 3-oxosphinganine. Mutations in this gene were identified in patients with hereditary sensory neuropathy type I.

Molecular Weight: 63 kDa (MW of target protein)

Application Details

Application Notes: WB: 1 µg/mL
Optimal conditions should be determined by the investigator.

Comment: SPTLC2 Blocking Peptide, catalog no. 33R-9690, is also available for use as a blocking control in assays to test for specificity of this SPTLC2 antibody

Restrictions: For Research Use only

Handling

Format: Lyophilized

Reconstitution: Lyophilized powder. Add distilled water for a 1 mg/mL concentration of SPTLC2 antibody in PBS

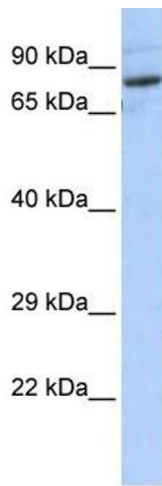
Concentration: Lot specific

Buffer: PBS

Handling Advice: Avoid repeated freeze/thaw cycles.
Dilute only prior to immediate use.

Storage: 4 °C/-20 °C

Storage Comment: Store at 2-8 °C for short periods. For longer periods of storage, store at -20 °C.



Western Blotting

Image 1. SPTLC2 antibody used at 1 ug/ml to detect target protein.