

Datasheet for ABIN631166 **anti-GCHFR antibody (N-Term)**



[Go to Product page](#)

1 Image

Overview

Quantity:	100 µL
Target:	GCHFR
Binding Specificity:	N-Term
Reactivity:	Human
Host:	Rabbit
Clonality:	Polyclonal
Conjugate:	This GCHFR antibody is un-conjugated
Application:	Western Blotting (WB)

Product Details

Immunogen:	GCHFR antibody was raised using the N terminal of GCHFR corresponding to a region with amino acids MPYLLISTQIRMEVGPTMVGDEQSDPELMQHLGASKRRALGNNFYEYYVD
Specificity:	GCHFR antibody was raised against the N terminal of GCHFR
Purification:	Affinity purified

Target Details

Target:	GCHFR
Alternative Name:	GCHFR (GCHFR Products)
Background:	GTP cyclohydrolase I feedback regulatory protein binds to and mediates tetrahydrobiopterin inhibition of GTP cyclohydrolase I. The regulatory protein, GCHFR, consists of a homodimer. It is postulated that GCHFR may play a role in regulating phenylalanine metabolism in the liver

Target Details

and in the production of biogenic amine neurotransmitters and nitric oxide.

Molecular Weight: 10 kDa (MW of target protein)

Application Details

Application Notes: WB: 1 µg/mL
Optimal conditions should be determined by the investigator.

Comment: GCHFR Blocking Peptide, catalog no. 33R-6313, is also available for use as a blocking control in assays to test for specificity of this GCHFR antibody

Restrictions: For Research Use only

Handling

Format: Lyophilized

Reconstitution: Lyophilized powder. Add distilled water for a 1 mg/mL concentration of GCHFR antibody in PBS

Concentration: Lot specific

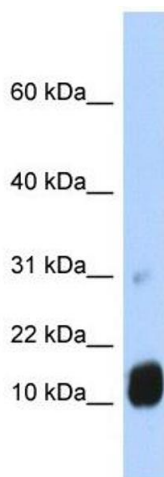
Buffer: PBS

Handling Advice: Avoid repeated freeze/thaw cycles.
Dilute only prior to immediate use.

Storage: 4 °C/-20 °C

Storage Comment: Store at 2-8 °C for short periods. For longer periods of storage, store at -20 °C.

Images



Western Blotting

Image 1. GCHFR antibody used at 1 µg/ml to detect target protein.