

Datasheet for ABIN631168  
**anti-SULT6B1 antibody (C-Term)**



[Go to Product page](#)

1 Image

## Overview

Quantity:	100 µL
Target:	SULT6B1
Binding Specificity:	C-Term
Reactivity:	Human
Host:	Rabbit
Clonality:	Polyclonal
Conjugate:	This SULT6B1 antibody is un-conjugated
Application:	Western Blotting (WB)

## Product Details

Immunogen:	SULT6 B1 antibody was raised using the C terminal of SULT6 1 corresponding to a region with amino acids FLGFFLTGEQIQTISVQSTFQAMRAKSQDTHGAVGPFLFRKGEVGDWKNL
Specificity:	SULT6 B1 antibody was raised against the C terminal of SULT6 1
Purification:	Affinity purified

## Target Details

Target:	SULT6B1
Alternative Name:	SULT6B1 ( <a href="#">SULT6B1 Products</a> )
Background:	SULT6B1 belongs to the sulfotransferase 1 family. SULT6B1 may catalyze the sulfate conjugation of many drugs, xenobiotic compounds, hormones, and neurotransmitters.

## Target Details

---

Molecular Weight: 30 kDa (MW of target protein)

## Application Details

---

Application Notes: WB: 1 µg/mL  
Optimal conditions should be determined by the investigator.

Comment: SULT6B1 Blocking Peptide, catalog no. 33R-2961, is also available for use as a blocking control in assays to test for specificity of this SULT6B1 antibody

Restrictions: For Research Use only

## Handling

---

Format: Lyophilized

Reconstitution: Lyophilized powder. Add distilled water for a 1 mg/mL concentration of SULT0 1 antibody in PBS

Concentration: Lot specific

Buffer: PBS

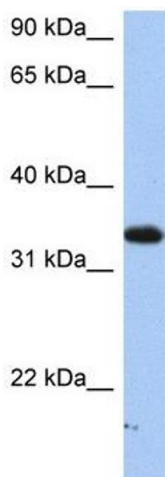
Handling Advice: Avoid repeated freeze/thaw cycles.  
Dilute only prior to immediate use.

Storage: 4 °C/-20 °C

Storage Comment: Store at 2-8 °C for short periods. For longer periods of storage, store at -20 °C.

## Images

---



### Western Blotting

**Image 1.** SULT6B1 antibody used at 1 ug/ml to detect target protein.