

Datasheet for ABIN631170 **anti-GLUD1 antibody (N-Term)**

3 Images



[Go to Product page](#)

Overview

Quantity:	100 µL
Target:	GLUD1
Binding Specificity:	N-Term
Reactivity:	Human, Mouse, Rat
Host:	Rabbit
Clonality:	Polyclonal
Conjugate:	This GLUD1 antibody is un-conjugated
Application:	Western Blotting (WB)

Product Details

Immunogen:	GLUD1 antibody was raised using the N terminal of GLUD1 corresponding to a region with amino acids AKAGVKINPKNYTDNELEKITRRFTMELAKKGFIGPIDVPAPDMSTGER
Specificity:	GLUD1 antibody was raised against the N terminal of GLUD1
Purification:	Affinity purified

Target Details

Target:	GLUD1
Alternative Name:	GLUD1 (GLUD1 Products)
Background:	L-glutamate dehydrogenase (EC 1.4.1.3) has a central role in nitrogen metabolism in plants and animals. Glutamate dehydrogenase is found in all organisms and catalyzes the oxidative deamination of 1-glutamate to 2-oxoglutarate. Glutamate, the main substrate of GLUD, is

Target Details

present in brain in concentrations higher than in other organs. In nervous tissue, GLUD appears to function in both the synthesis and the catabolism of glutamate and perhaps in ammonia detoxification.

Molecular Weight: 56 kDa (MW of target protein)

Pathways: [Positive Regulation of Peptide Hormone Secretion](#), [Warburg Effect](#)

Application Details

Application Notes: WB: 1 µg/mL
Optimal conditions should be determined by the investigator.

Comment: GLUD1 Blocking Peptide, catalog no. 33R-1287, is also available for use as a blocking control in assays to test for specificity of this GLUD1 antibody

Restrictions: For Research Use only

Handling

Format: Lyophilized

Reconstitution: Lyophilized powder. Add distilled water for a 1 mg/mL concentration of GLUD1 antibody in PBS

Concentration: Lot specific

Buffer: PBS

Handling Advice: Avoid repeated freeze/thaw cycles.
Dilute only prior to immediate use.

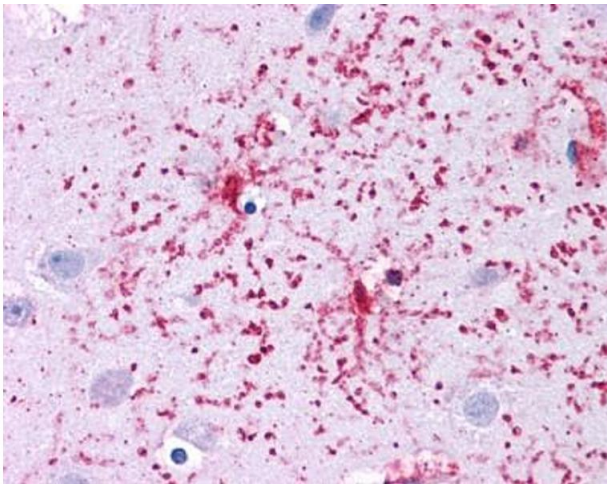
Storage: 4 °C/-20 °C

Storage Comment: Store at 2-8 °C for short periods. For longer periods of storage, store at -20 °C.



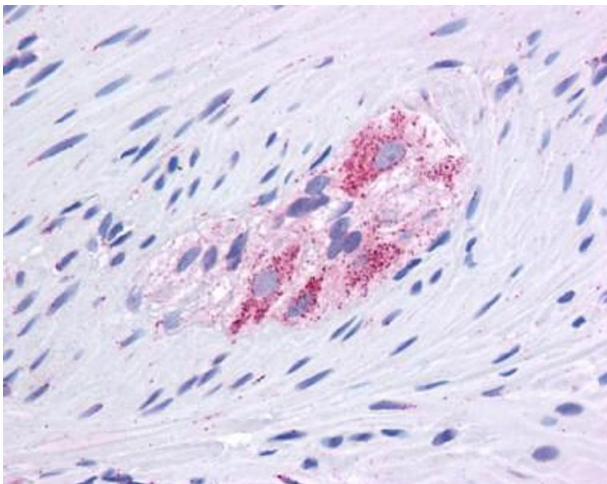
Western Blotting

Image 1. GLUD1 antibody used at 1 ug/ml to detect target protein.



Immunohistochemistry

Image 2. GLUD1 antibody was used for immunohistochemistry at a concentration of 4-8 ug/ml. Magnification is at 400X



Immunohistochemistry

Image 3. GLUD1 antibody was used for immunohistochemistry at a concentration of 4-8 ug/ml. Magnification is at 400X