

Datasheet for ABIN631176
anti-ALDOC antibody (C-Term)



[Go to Product page](#)

1 Image

Overview

Quantity:	100 µL
Target:	ALDOC
Binding Specificity:	C-Term
Reactivity:	Human, Mouse, Rat
Host:	Rabbit
Clonality:	Polyclonal
Conjugate:	This ALDOC antibody is un-conjugated
Application:	Western Blotting (WB)

Product Details

Immunogen:	ALDOC antibody was raised using the C terminal of ALDOC corresponding to a region with amino acids CPLPRPWALTFSYGRALQASALNAWRGQRDNAGAATEEFIKRAEVNGLAA
Specificity:	ALDOC antibody was raised against the C terminal of ALDOC
Purification:	Affinity purified

Target Details

Target:	ALDOC
Alternative Name:	ALDOC (ALDOC Products)
Background:	ALDOC gene is a member of the class I fructose-biphosphate aldolase gene family. ALDOC is a glycolytic enzyme that catalyzes the reversible aldol cleavage of fructose-1,6-biphosphate and fructose 1-phosphate to dihydroxyacetone phosphate and either glyceraldehyde-3-phosphate

Target Details

or glyceraldehyde, respectively.

Molecular Weight: 39 kDa (MW of target protein)

Application Details

Application Notes: WB: 1 µg/mL

Optimal conditions should be determined by the investigator.

Comment: ALDOC Blocking Peptide, catalog no. 33R-1767, is also available for use as a blocking control in assays to test for specificity of this ALDOC antibody

Restrictions: For Research Use only

Handling

Format: Lyophilized

Reconstitution: Lyophilized powder. Add distilled water for a 1 mg/mL concentration of ALDOC antibody in PBS

Concentration: Lot specific

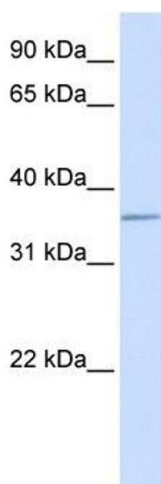
Buffer: PBS

Handling Advice: Avoid repeated freeze/thaw cycles.
Dilute only prior to immediate use.

Storage: 4 °C/-20 °C

Storage Comment: Store at 2-8 °C for short periods. For longer periods of storage, store at -20 °C.

Images



Western Blotting

Image 1. ALDOC antibody used at 1 µg/ml to detect target protein.