

Datasheet for ABIN631191
anti-SULT1A1 antibody (N-Term)



[Go to Product page](#)

1 Image

Overview

Quantity:	100 µL
Target:	SULT1A1
Binding Specificity:	N-Term
Reactivity:	Human
Host:	Rabbit
Clonality:	Polyclonal
Conjugate:	This SULT1A1 antibody is un-conjugated
Application:	Western Blotting (WB)

Product Details

Immunogen:	SULT1 A1 antibody was raised using the N terminal of SULT1 1 corresponding to a region with amino acids ELIQDTSRPPLEYVKGVPLIKYFAEALGPLQSFQARPDDLLISTYPKSGT
Specificity:	SULT1 A1 antibody was raised against the N terminal of SULT1 1
Purification:	Affinity purified

Target Details

Target:	SULT1A1
Alternative Name:	SULT1A1 (SULT1A1 Products)
Background:	Sulfotransferase enzymes catalyze the sulfate conjugation of many hormones, neurotransmitters, drugs, and xenobiotic compounds. These cytosolic enzymes are different in their tissue distributions and substrate specificities. The gene structure (number and length of

Target Details

exons) is similar among family members. SULT1A1 is one of two phenol sulfotransferases with thermostable enzyme activity.

Molecular Weight: 34 kDa (MW of target protein)

Application Details

Application Notes: WB: 1 µg/mL
Optimal conditions should be determined by the investigator.

Comment: SULT1A1 Blocking Peptide, catalog no. 33R-2553, is also available for use as a blocking control in assays to test for specificity of this SULT1A1 antibody

Restrictions: For Research Use only

Handling

Format: Lyophilized

Reconstitution: Lyophilized powder. Add distilled water for a 1 mg/mL concentration of SULT0 1 antibody in PBS

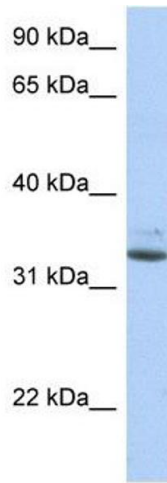
Concentration: Lot specific

Buffer: PBS

Handling Advice: Avoid repeated freeze/thaw cycles.
Dilute only prior to immediate use.

Storage: 4 °C/-20 °C

Storage Comment: Store at 2-8 °C for short periods. For longer periods of storage, store at -20 °C.



Western Blotting

Image 1. SULT1A1 antibody used at 1 ug/ml to detect target protein.