

Datasheet for ABIN631201
anti-WDR6 antibody (C-Term)



[Go to Product page](#)

2 Images

Overview

Quantity:	100 µL
Target:	WDR6
Binding Specificity:	C-Term
Reactivity:	Human, Mouse
Host:	Rabbit
Clonality:	Polyclonal
Conjugate:	This WDR6 antibody is un-conjugated
Application:	Western Blotting (WB), Immunohistochemistry (IHC)

Product Details

Immunogen:	WDR6 antibody was raised using the C terminal of WDR6 corresponding to a region with amino acids TPSLTQLQAHS CGINSLHTLPTREGHHLVASGSEDGSLHVFVLAVEMQLQE
Specificity:	WDR6 antibody was raised against the C terminal of WDR6
Purification:	Affinity purified

Target Details

Target:	WDR6
Alternative Name:	WDR6 (WDR6 Products)
Background:	WDR6 is a member of the WD repeat protein family. WD repeats are minimally conserved regions of approximately 40 amino acids typically bracketed by gly-his and trp-asp (GH-WD), which may facilitate formation of heterotrimeric or multiprotein complexes. Members of this

Target Details

family are involved in a variety of cellular processes, including cell cycle progression, signal transduction, apoptosis, and gene regulation.

Molecular Weight: 53 kDa (MW of target protein)

Application Details

Application Notes: WB: 0.5 µg/mL, IHC: 4-8 µg/mL
Optimal conditions should be determined by the investigator.

Comment: WDR6 Blocking Peptide, catalog no. 33R-9232, is also available for use as a blocking control in assays to test for specificity of this WDR6 antibody

Restrictions: For Research Use only

Handling

Format: Lyophilized

Reconstitution: Lyophilized powder. Add distilled water for a 1 mg/mL concentration of WDR6 antibody in PBS

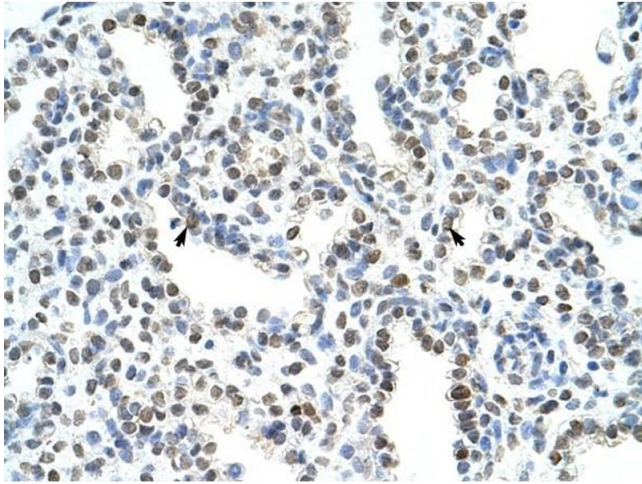
Concentration: Lot specific

Buffer: PBS

Handling Advice: Avoid repeated freeze/thaw cycles.
Dilute only prior to immediate use.

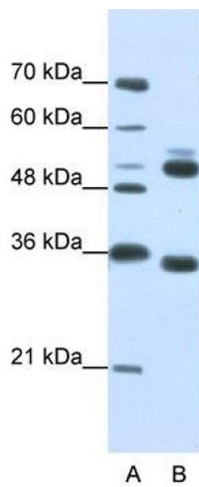
Storage: 4 °C/-20 °C

Storage Comment: Store at 2-8 °C for short periods. For longer periods of storage, store at -20 °C.



Immunohistochemistry

Image 1. WDR6 antibody was used for immunohistochemistry at a concentration of 4-8 ug/ml to stain Alveolar cells (arrows) in Human Lung. Magnification is at 400X



Western Blotting

Image 2. WDR6 antibody used at 0.5 ug/ml to detect target protein.