

Datasheet for ABIN631203 **anti-PRAME antibody (N-Term)**



[Go to Product page](#)

1 Image

Overview

Quantity:	100 µL
Target:	PRAME
Binding Specificity:	N-Term
Reactivity:	Human
Host:	Rabbit
Clonality:	Polyclonal
Conjugate:	This PRAME antibody is un-conjugated
Application:	Western Blotting (WB)

Product Details

Immunogen:	PRAME antibody was raised using the N terminal of PRAME corresponding to a region with amino acids MERRRLWGSIQSRYISMSVWTSPRRLVELAGQSLKDEALIAIALELLPR
Specificity:	PRAME antibody was raised against the N terminal of PRAME
Purification:	Affinity purified

Target Details

Target:	PRAME
Alternative Name:	PRAME (PRAME Products)
Background:	PRAME functions as a transcriptional repressor, inhibiting the signaling of retinoic acid through the retinoic acid receptors RARA, RARB and RARG. PRAME prevents retinoic acid-induced cell proliferation arrest, differentiation and apoptosis.

Target Details

Molecular Weight:	56 kDa (MW of target protein)
Pathways:	Retinoic Acid Receptor Signaling Pathway , Nuclear Hormone Receptor Binding

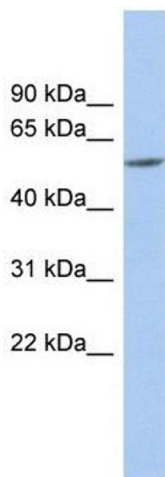
Application Details

Application Notes:	WB: 1 µg/mL Optimal conditions should be determined by the investigator.
Comment:	PRAME Blocking Peptide, catalog no. 33R-5955, is also available for use as a blocking control in assays to test for specificity of this PRAME antibody
Restrictions:	For Research Use only

Handling

Format:	Lyophilized
Reconstitution:	Lyophilized powder. Add distilled water for a 1 mg/mL concentration of PRAME antibody in PBS
Concentration:	Lot specific
Buffer:	PBS
Handling Advice:	Avoid repeated freeze/thaw cycles. Dilute only prior to immediate use.
Storage:	4 °C/-20 °C
Storage Comment:	Store at 2-8 °C for short periods. For longer periods of storage, store at -20 °C.

Images



Western Blotting

Image 1. PRAME antibody used at 1 µg/ml to detect target protein.