

Datasheet for ABIN631209 **anti-ODF2 antibody (N-Term)**



[Go to Product page](#)

1 Image

Overview

Quantity:	100 µL
Target:	ODF2
Binding Specificity:	N-Term
Reactivity:	Human, Rat, Mouse
Host:	Rabbit
Clonality:	Polyclonal
Conjugate:	This ODF2 antibody is un-conjugated
Application:	Western Blotting (WB)

Product Details

Immunogen:	ODF2 antibody was raised using the N terminal of ODF2 corresponding to a region with amino acids TCTDINTLTRQKELLQKLSTFEETNRTLRLDLLREQHCKEDSERLMEQQG
Specificity:	ODF2 antibody was raised against the N terminal of ODF2
Purification:	Affinity purified

Target Details

Target:	ODF2
Alternative Name:	ODF2 (ODF2 Products)
Background:	The outer dense fibers are cytoskeletal structures that surround the axoneme in the middle piece and principal piece of the sperm tail. The fibers function in maintaining the elastic structure and recoil of the sperm tail as well as in protecting the tail from shear forces during

Target Details

epididymal transport and ejaculation. Defects in the outer dense fibers lead to abnormal sperm morphology and infertility. ODF2 is one of the major outer dense fiber proteins.

Molecular Weight: 89 kDa (MW of target protein)

Pathways: [M Phase](#)

Application Details

Application Notes: WB: 1 µg/mL
Optimal conditions should be determined by the investigator.

Comment: ODF2 Blocking Peptide, catalog no. 33R-9001, is also available for use as a blocking control in assays to test for specificity of this ODF2 antibody

Restrictions: For Research Use only

Handling

Format: Lyophilized

Reconstitution: Lyophilized powder. Add distilled water for a 1 mg/mL concentration of ODF2 antibody in PBS

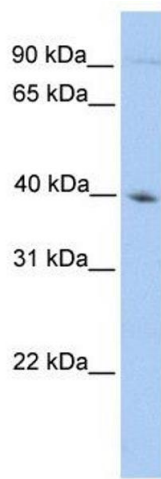
Concentration: Lot specific

Buffer: PBS

Handling Advice: Avoid repeated freeze/thaw cycles.
Dilute only prior to immediate use.

Storage: 4 °C/-20 °C

Storage Comment: Store at 2-8 °C for short periods. For longer periods of storage, store at -20 °C.



Western Blotting

Image 1. ODF2 antibody used at 1 ug/ml to detect target protein.