

Datasheet for ABIN631216 **anti-GALT antibody (C-Term)**



[Go to Product page](#)

1 Image

Overview

Quantity:	100 µL
Target:	GALT
Binding Specificity:	C-Term
Reactivity:	Human, Mouse, Rat
Host:	Rabbit
Clonality:	Polyclonal
Conjugate:	This GALT antibody is un-conjugated
Application:	Western Blotting (WB)

Product Details

Immunogen:	GALT antibody was raised using the C terminal of GALT corresponding to a region with amino acids LLRSATVRKFMVGYEMLAQAQRDLTPEQAAERLRALPEVHYHLGQKDRET
Specificity:	GALT antibody was raised against the C terminal of GALT
Purification:	Affinity purified

Target Details

Target:	GALT
Alternative Name:	GALT (GALT Products)
Background:	Galactose-1-phosphate uridyl transferase (GALT) catalyzes the second step of the Leloir pathway of galactose metabolism, namely the conversion of UDP-glucose + galactose-1-phosphate to glucose-1-phosphate + UDP-galactose. The absence of this enzyme results in

Target Details

classic galactosemia in humans and can be fatal in the newborn period if lactose is not removed from the diet.

Molecular Weight: 43 kDa (MW of target protein)

Application Details

Application Notes: WB: 1 µg/mL
Optimal conditions should be determined by the investigator.

Comment: GALT Blocking Peptide, catalog no. 33R-5189, is also available for use as a blocking control in assays to test for specificity of this GALT antibody

Restrictions: For Research Use only

Handling

Format: Lyophilized

Reconstitution: Lyophilized powder. Add distilled water for a 1 mg/mL concentration of GALT antibody in PBS

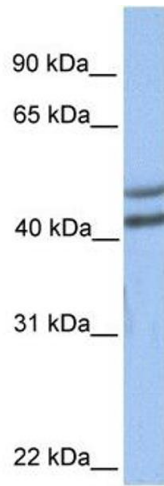
Concentration: Lot specific

Buffer: PBS

Handling Advice: Avoid repeated freeze/thaw cycles.
Dilute only prior to immediate use.

Storage: 4 °C/-20 °C

Storage Comment: Store at 2-8 °C for short periods. For longer periods of storage, store at -20 °C.



Western Blotting

Image 1. GALT antibody used at 1 ug/ml to detect target protein.