

## Datasheet for ABIN631228 **anti-TJP2 antibody**



[Go to Product page](#)

### 1 Image

#### Overview

Quantity:	100 µL
Target:	TJP2
Reactivity:	Human, Dog
Host:	Rabbit
Clonality:	Polyclonal
Conjugate:	This TJP2 antibody is un-conjugated
Application:	Western Blotting (WB)

#### Product Details

Immunogen:	TJP2 antibody was raised using a synthetic peptide corresponding to a region with amino acids TVVPETNKEPRYQEDPPAPQPKAAPRTFLRSPEDAIYGPNTKMVRFKK
Purification:	Affinity purified

#### Target Details

Target:	TJP2
Alternative Name:	TJP2 ( <a href="#">TJP2 Products</a> )
Background:	Tight junction proteins (TJPs) belong to a family of membrane-associated guanylate kinase (MAGUK) homologs that are involved in the organization of epithelial and endothelial intercellular junctions. TJPs bind to the cytoplasmic C termini of junctional transmembrane proteins and link them to the actin cytoskeleton.
Molecular Weight:	134 kDa (MW of target protein)

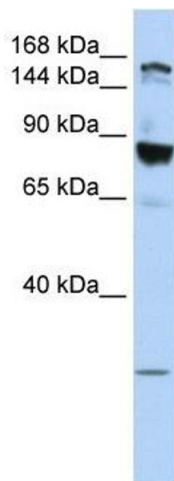
## Application Details

Application Notes:	WB: 1 µg/mL Optimal conditions should be determined by the investigator.
Comment:	TJP2 Blocking Peptide, catalog no. 33R-9376, is also available for use as a blocking control in assays to test for specificity of this TJP2 antibody
Restrictions:	For Research Use only

## Handling

Format:	Lyophilized
Reconstitution:	Lyophilized powder. Add distilled water for a 1 mg/mL concentration of TJP2 antibody in PBS
Concentration:	Lot specific
Buffer:	PBS
Handling Advice:	Avoid repeated freeze/thaw cycles.
Storage:	4 °C/-20 °C
Storage Comment:	Store at 2-8 °C for short periods. For longer periods of storage, store at -20 °C.

## Images



### Western Blotting

**Image 1.** TJP2 antibody used at 1 ug/ml to detect target protein.