

Datasheet for ABIN631250  
**anti-RAP1B antibody (N-Term)**



[Go to Product page](#)

1 Image

## Overview

Quantity:	100 µL
Target:	RAP1B
Binding Specificity:	N-Term
Reactivity:	Human, Mouse, Rat, Drosophila melanogaster
Host:	Rabbit
Clonality:	Polyclonal
Conjugate:	This RAP1B antibody is un-conjugated
Application:	Western Blotting (WB)

## Product Details

Immunogen:	RAP1 B antibody was raised using the N terminal of RAP1 corresponding to a region with amino acids MREYKLVVLGSGGVGKSALTVQFVQGIFVEKYDPTIEDSYRKQVEVDAQQ
Specificity:	RAP1 B antibody was raised against the N terminal of RAP1
Purification:	Affinity purified

## Target Details

Target:	RAP1B
Alternative Name:	RAP1B ( <a href="#">RAP1B Products</a> )
Background:	RAP1B and RAP1A belong to a superfamily of RAS-like small GTP-binding proteins involved in cell signaling.

## Target Details

Molecular Weight:	21 kDa (MW of target protein)
Pathways:	<a href="#">CXCR4-mediated Signaling Events</a> , <a href="#">Signaling of Hepatocyte Growth Factor Receptor</a>

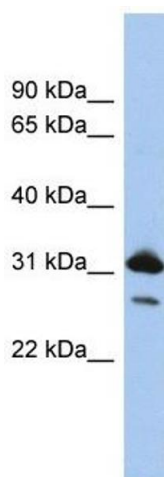
## Application Details

Application Notes:	WB: 1 µg/mL Optimal conditions should be determined by the investigator.
Comment:	RAP1B Blocking Peptide, catalog no. 33R-6359, is also available for use as a blocking control in assays to test for specificity of this RAP1B antibody
Restrictions:	For Research Use only

## Handling

Format:	Lyophilized
Reconstitution:	Lyophilized powder. Add distilled water for a 1 mg/mL concentration of RAP0 antibody in PBS
Concentration:	Lot specific
Buffer:	PBS
Handling Advice:	Avoid repeated freeze/thaw cycles. Dilute only prior to immediate use.
Storage:	4 °C/-20 °C
Storage Comment:	Store at 2-8 °C for short periods. For longer periods of storage, store at -20 °C.

## Images



### Western Blotting

**Image 1.** RAP1B antibody used at 1 µg/ml to detect target protein.