

Datasheet for ABIN631261
anti-TEX14 antibody (C-Term)



[Go to Product page](#)

1 Image

Overview

| | |
|----------------------|--------------------------------------|
| Quantity: | 100 µL |
| Target: | TEX14 |
| Binding Specificity: | C-Term |
| Reactivity: | Human |
| Host: | Rabbit |
| Clonality: | Polyclonal |
| Conjugate: | This TEX14 antibody is un-conjugated |
| Application: | Western Blotting (WB) |

Product Details

| | |
|---------------|--|
| Immunogen: | TEX14 antibody was raised using the C terminal of TEX14 corresponding to a region with amino acids ASSDTLVAVEKSYSTSSPIEDFEGIQGAFAQPQVSGEEKFQMRKILGKN |
| Specificity: | TEX14 antibody was raised against the C terminal of TEX14 |
| Purification: | Affinity purified |

Target Details

| | |
|-------------------|---|
| Target: | TEX14 |
| Alternative Name: | TEX14 (TEX14 Products) |
| Background: | TEX14 belongs to the protein kinase superfamily. It contains 3 ANK repeats and 1 protein kinase domain. TEX14 is required for spermatogenesis and male fertility. It may be required for normal structure of the intercellular bridge that connects spermatocytes and spermatogonia. It |

Target Details

has no protein kinase activity. This gene is similar to a mouse gene that is expressed in the testis.

Molecular Weight: 160 kDa (MW of target protein)

Pathways: [Maintenance of Protein Location](#)

Application Details

Application Notes: WB: 1 µg/mL
Optimal conditions should be determined by the investigator.

Comment: TEX14 Blocking Peptide, catalog no. 33R-1529, is also available for use as a blocking control in assays to test for specificity of this TEX14 antibody

Restrictions: For Research Use only

Handling

Format: Lyophilized

Reconstitution: Lyophilized powder. Add distilled water for a 1 mg/mL concentration of TEX14 antibody in PBS

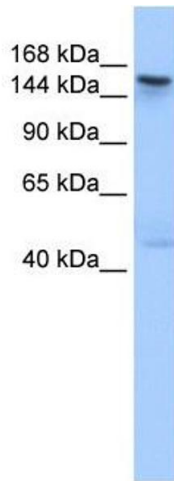
Concentration: Lot specific

Buffer: PBS

Handling Advice: Avoid repeated freeze/thaw cycles.
Dilute only prior to immediate use.

Storage: 4 °C/-20 °C

Storage Comment: Store at 2-8 °C for short periods. For longer periods of storage, store at -20 °C.



Western Blotting

Image 1. TEX14 antibody used at 1 ug/ml to detect target protein.