

Datasheet for ABIN631269

anti-CSNK2A1/CK II alpha antibody (Middle Region)[Go to Product page](#)**1** Image

Overview

Quantity:	100 µL
Target:	CSNK2A1/CK II alpha (CSNK2A1)
Binding Specificity:	Middle Region
Reactivity:	Human, Mouse, Rat, Drosophila melanogaster, C. elegans
Host:	Rabbit
Clonality:	Polyclonal
Conjugate:	This CSNK2A1/CK II alpha antibody is un-conjugated
Application:	Western Blotting (WB)

Product Details

Immunogen:	CK2 alpha 1 antibody was raised using the middle region of CSNK2 A1 corresponding to a region with amino acids LGCMLASMIFRKEPFFHGHHDNYDQLVRIAKVLGTEDLYDYIDKYNIELDP
Specificity:	CK2 alpha 1 antibody was raised against the middle region of CSNK2 A1
Purification:	Affinity purified

Target Details

Target:	CSNK2A1/CK II alpha (CSNK2A1)
Abstract:	CSNK2A1 Products
Background:	Casein kinase II is a serine/threonine protein kinase that phosphorylates acidic proteins such as casein. The kinase exists as a tetramer and is composed of an alpha, an alpha-prime, and two beta subunits. The alpha subunits contain the catalytic activity while the beta subunits undergo

Target Details

autophosphorylation. CSNK2A1 represents the alpha subunit.

Molecular Weight: 45 kDa (MW of target protein)

Pathways: [SARS-CoV-2 Protein Interactome](#)

Application Details

Application Notes: WB: 1 µg/mL

Optimal conditions should be determined by the investigator.

Comment: CK2 alpha 1 Blocking Peptide, catalog no. 33R-4966, is also available for use as a blocking control in assays to test for specificity of this CK2 alpha 1 antibody

Restrictions: For Research Use only

Handling

Format: Lyophilized

Reconstitution: Lyophilized powder. Add distilled water for a 1 mg/mL concentration of CSNK0 1 antibody in PBS

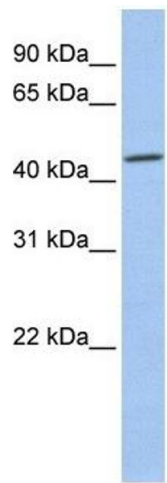
Concentration: Lot specific

Buffer: PBS

Handling Advice: Avoid repeated freeze/thaw cycles.
Dilute only prior to immediate use.

Storage: 4 °C/-20 °C

Storage Comment: Store at 2-8 °C for short periods. For longer periods of storage, store at -20 °C.



Western Blotting

Image 1. CK2 alpha 1 antibody used at 1 ug/ml to detect target protein.