

Datasheet for ABIN631283 **anti-PANK4 antibody (N-Term)**



[Go to Product page](#)

1 Image

Overview

| | |
|----------------------|--------------------------------------|
| Quantity: | 100 µL |
| Target: | PANK4 |
| Binding Specificity: | N-Term |
| Reactivity: | Human |
| Host: | Rabbit |
| Clonality: | Polyclonal |
| Conjugate: | This PANK4 antibody is un-conjugated |
| Application: | Western Blotting (WB) |

Product Details

| | |
|---------------|--|
| Immunogen: | PANK4 antibody was raised using the N terminal of PANK4 corresponding to a region with amino acids MAECGASGSGSSGDSLDKSITLPPDEIFRNLENKRFAIDIGGSLTKLAY |
| Specificity: | PANK4 antibody was raised against the N terminal of PANK4 |
| Purification: | Affinity purified |

Target Details

| | |
|-------------------|--|
| Target: | PANK4 |
| Alternative Name: | PANK4 (PANK4 Products) |
| Background: | This gene encodes a protein belonging to the pantothenate kinase family. Pantothenate kinase is a key regulatory enzyme in the biosynthesis of coenzyme A (CoA) in bacteria and mammalian cells. |

Target Details

| | |
|-------------------|---|
| Molecular Weight: | 86 kDa (MW of target protein) |
| Pathways: | Ribonucleoside Biosynthetic Process |

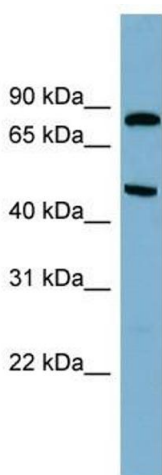
Application Details

| | |
|--------------------|--|
| Application Notes: | WB: 1 µg/mL Optimal conditions should be determined by the investigator. |
| Comment: | PANK4 Blocking Peptide, catalog no. 33R-5630, is also available for use as a blocking control in assays to test for specificity of this PANK4 antibody |
| Restrictions: | For Research Use only |

Handling

| | |
|------------------|--|
| Format: | Lyophilized |
| Reconstitution: | Lyophilized powder. Add distilled water for a 1 mg/mL concentration of PANK4 antibody in PBS |
| Concentration: | Lot specific |
| Buffer: | PBS |
| Handling Advice: | Avoid repeated freeze/thaw cycles. Dilute only prior to immediate use. |
| Storage: | 4 °C/-20 °C |
| Storage Comment: | Store at 2-8 °C for short periods. For longer periods of storage, store at -20 °C. |

Images



Western Blotting

Image 1. PANK4 antibody used at 1 µg/ml to detect target protein.