

Datasheet for ABIN631287

anti-Selenoprotein P antibody (N-Term)[Go to Product page](#)**1** Image

Overview

Quantity:	100 µL
Target:	Selenoprotein P (SEPP1)
Binding Specificity:	N-Term
Reactivity:	Human
Host:	Rabbit
Clonality:	Polyclonal
Conjugate:	This Selenoprotein P antibody is un-conjugated
Application:	Western Blotting (WB)

Product Details

Immunogen:	SEPP1 antibody was raised using the N terminal of SEPP1 corresponding to a region with amino acids LGLALALCLLPSGGTESQDQSSLCKQPPAWSIRDQDPMLNSNGSVTVVAL
Specificity:	SEPP1 antibody was raised against the N terminal of SEPP1
Purification:	Affinity purified

Target Details

Target:	Selenoprotein P (SEPP1)
Alternative Name:	SEPP1 (SEPP1 Products)
Background:	SEPP1 is a selenoprotein containing multiple selenocysteine (Sec) residues, which are encoded by the UGA codon that normally signals translation termination. The 3' UTR of selenoprotein genes have a common stem-loop structure, the sec insertion sequence (SECIS), which is

Target Details

necessary for the recognition of UGA as a Sec codon rather than as a stop signal. This selenoprotein is an extracellular glycoprotein, and is unusual in that it contains 10 Sec residues per polypeptide. It is a heparin-binding protein that appears to be associated with endothelial cells, and has been implicated to function as an antioxidant in the extracellular space.

Molecular Weight: 46 kDa (MW of target protein)

Application Details

Application Notes: WB: 1 µg/mL
Optimal conditions should be determined by the investigator.

Comment: SEPP1 Blocking Peptide, catalog no. 33R-4984, is also available for use as a blocking control in assays to test for specificity of this SEPP1 antibody

Restrictions: For Research Use only

Handling

Format: Lyophilized

Reconstitution: Lyophilized powder. Add distilled water for a 1 mg/mL concentration of SEPP1 antibody in PBS

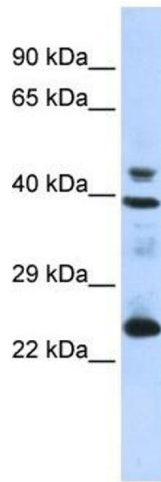
Concentration: Lot specific

Buffer: PBS

Handling Advice: Avoid repeated freeze/thaw cycles.
Dilute only prior to immediate use.

Storage: 4 °C/-20 °C

Storage Comment: Store at 2-8 °C for short periods. For longer periods of storage, store at -20 °C.



Western Blotting

Image 1. SEPP1 antibody used at 1 ug/ml to detect target protein.