

Datasheet for ABIN631292
anti-PRTFDC1 antibody (N-Term)



[Go to Product page](#)

1 Image

Overview

Quantity:	100 µL
Target:	PRTFDC1
Binding Specificity:	N-Term
Reactivity:	Human
Host:	Rabbit
Clonality:	Polyclonal
Conjugate:	This PRTFDC1 antibody is un-conjugated
Application:	Western Blotting (WB)

Product Details

Immunogen:	PRTFDC1 antibody was raised using the N terminal of PRTFDC1 corresponding to a region with amino acids AGSSEEAPDYGRGVVIMDDWPGYDLNLFYTPQHYYGDLEYVLIPHGIIVD
Specificity:	PRTFDC1 antibody was raised against the N terminal of PRTFDC1
Purification:	Affinity purified

Target Details

Target:	PRTFDC1
Alternative Name:	PRTFDC1 (PRTFDC1 Products)
Background:	PRTFDC1 belongs to the purine/pyrimidine phosphoribosyltransferase family. Epigenetic silencing of PRTFDC1 by hypermethylation of the CpG islands leads to a loss of PRTFDC1 function, which might be involved in squamous cell oral carcinogenesis.

Target Details

Molecular Weight: 26 kDa (MW of target protein)

Pathways: [Ribonucleoside Biosynthetic Process](#)

Application Details

Application Notes: WB: 1 µg/mL
Optimal conditions should be determined by the investigator.

Comment: PRTFDC1 Blocking Peptide, catalog no. 33R-1226, is also available for use as a blocking control in assays to test for specificity of this PRTFDC1 antibody

Restrictions: For Research Use only

Handling

Format: Lyophilized

Reconstitution: Lyophilized powder. Add distilled water for a 1 mg/mL concentration of PRTFDC1 antibody in PBS

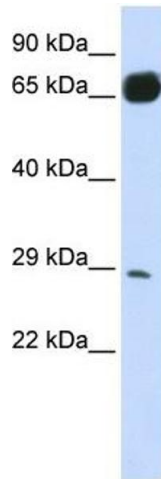
Concentration: Lot specific

Buffer: PBS

Handling Advice: Avoid repeated freeze/thaw cycles.
Dilute only prior to immediate use.

Storage: 4 °C/-20 °C

Storage Comment: Store at 2-8 °C for short periods. For longer periods of storage, store at -20 °C.



Western Blotting

Image 1. PRTFDC1 antibody used at 1 ug/ml to detect target protein.