

Datasheet for ABIN631293
anti-INMT antibody (N-Term)



[Go to Product page](#)

1 Image

Overview

| | |
|----------------------|-------------------------------------|
| Quantity: | 100 µL |
| Target: | INMT |
| Binding Specificity: | N-Term |
| Reactivity: | Human |
| Host: | Rabbit |
| Clonality: | Polyclonal |
| Conjugate: | This INMT antibody is un-conjugated |
| Application: | Western Blotting (WB) |

Product Details

| | |
|---------------|-----------------------------------------------------------------------------------------------------------------------------------------------------|
| Immunogen: | INMT antibody was raised using the N terminal of INMT corresponding to a region with amino acids KGGFTGGDEYQKHFLPRDYLATYYSFDGSPSPEAEMLKFNLECLHKTFGP |
| Specificity: | INMT antibody was raised against the N terminal of INMT |
| Purification: | Affinity purified |

Target Details

| | |
|-------------------|------------------------------------------------------------------------------------------------------------------------------------------------------------------------------|
| Target: | INMT |
| Alternative Name: | INMT (INMT Products) |
| Background: | N-methylation of endogenous and xenobiotic compounds is a major method by which they are degraded. This gene encodes an enzyme that N-methylates indoles such as tryptamine. |

Target Details

Molecular Weight: 29 kDa (MW of target protein)

Application Details

Application Notes: WB: 1 µg/mL
Optimal conditions should be determined by the investigator.

Comment: INMT Blocking Peptide, catalog no. 33R-4392, is also available for use as a blocking control in assays to test for specificity of this INMT antibody

Restrictions: For Research Use only

Handling

Format: Lyophilized

Reconstitution: Lyophilized powder. Add distilled water for a 1 mg/mL concentration of INMT antibody in PBS

Concentration: Lot specific

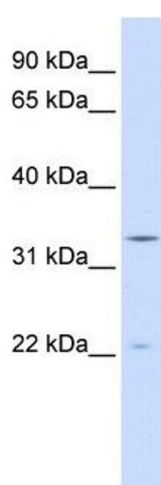
Buffer: PBS

Handling Advice: Avoid repeated freeze/thaw cycles.
Dilute only prior to immediate use.

Storage: 4 °C/-20 °C

Storage Comment: Store at 2-8 °C for short periods. For longer periods of storage, store at -20 °C.

Images



Western Blotting

Image 1. INMT antibody used at 1 ug/ml to detect target protein.