

Datasheet for ABIN631316
anti-RNF165 antibody (Middle Region)



[Go to Product page](#)

2 Images

Overview

Quantity:	100 µL
Target:	RNF165
Binding Specificity:	Middle Region
Reactivity:	Human, Mouse, Rat, Dog
Host:	Rabbit
Clonality:	Polyclonal
Conjugate:	This RNF165 antibody is un-conjugated
Application:	Western Blotting (WB), Immunohistochemistry (IHC)

Product Details

Immunogen:	RNF165 antibody was raised using the middle region of RNF165 corresponding to a region with amino acids SSTQMVVHEIRNYPYPQLHFLALQGLNPSRHTSAVRESYEELLQLEDRLG
Specificity:	RNF165 antibody was raised against the middle region of RNF165
Purification:	Affinity purified

Target Details

Target:	RNF165
Alternative Name:	RNF165 (RNF165 Products)
Background:	RNF165 is encoded in regions involved in pericentric inversions in patients with bipolar affective disorder.

Target Details

Molecular Weight: 38 kDa (MW of target protein)

Application Details

Application Notes: WB: 1 µg/mL, IHC: 4-8 µg/mL
Optimal conditions should be determined by the investigator.

Comment: RNF165 Blocking Peptide, catalog no. 33R-8857, is also available for use as a blocking control in assays to test for specificity of this RNF165 antibody

Restrictions: For Research Use only

Handling

Format: Lyophilized

Reconstitution: Lyophilized powder. Add distilled water for a 1 mg/mL concentration of RNF165 antibody in PBS

Concentration: Lot specific

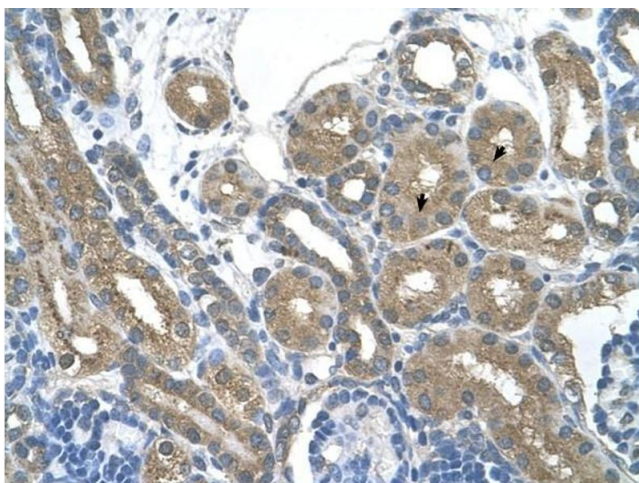
Buffer: PBS

Handling Advice: Avoid repeated freeze/thaw cycles.
Dilute only prior to immediate use.

Storage: 4 °C/-20 °C

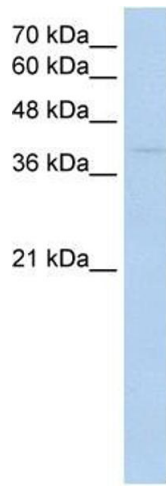
Storage Comment: Store at 2-8 °C for short periods. For longer periods of storage, store at -20 °C.

Images



Immunohistochemistry

Image 1. RNF165 antibody was used for immunohistochemistry at a concentration of 4-8 ug/ml to stain Epithelial cells of renal tubule (arrows) in Human Kidney. Magnification is at 400X



Western Blotting

Image 2. RNF165 antibody used at 1 ug/ml to detect target protein.