

Datasheet for ABIN631336  
**anti-METT5D1 antibody (N-Term)**



[Go to Product page](#)

1 Image

## Overview

Quantity:	100 µL
Target:	METT5D1
Binding Specificity:	N-Term
Reactivity:	Human
Host:	Rabbit
Clonality:	Polyclonal
Conjugate:	This METT5D1 antibody is un-conjugated
Application:	Western Blotting (WB)

## Product Details

Immunogen:	METT5 D1 antibody was raised using the N terminal of METT5 1 corresponding to a region with amino acids MLRYPYFCRMYKECLSCWLESGIPNLGVWPNRIHTTAEKYREYEAREQTD
Specificity:	METT5 D1 antibody was raised against the n terminal of METT5 1
Purification:	Affinity purified

## Target Details

Target:	METT5D1
Alternative Name:	METT5D1 ( <a href="#">METT5D1 Products</a> )
Background:	METT5D1 belongs to the methyltransferase superfamily, mraW family. METT5D1 is a probable S-adenosyl-L-methionine-dependent methyltransferase.

## Target Details

---

Molecular Weight: 45 kDa (MW of target protein)

## Application Details

---

Application Notes: WB: 1 µg/mL  
Optimal conditions should be determined by the investigator.

Comment: METT5D1 Blocking Peptide, catalog no. 33R-6215, is also available for use as a blocking control in assays to test for specificity of this METT5D1 antibody

Restrictions: For Research Use only

## Handling

---

Format: Lyophilized

Reconstitution: Lyophilized powder. Add distilled water for a 1 mg/mL concentration of METT0 1 antibody in PBS

Concentration: Lot specific

Buffer: PBS

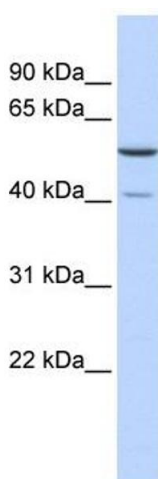
Handling Advice: Avoid repeated freeze/thaw cycles.  
Dilute only prior to immediate use.

Storage: 4 °C/-20 °C

Storage Comment: Store at 2-8 °C for short periods. For longer periods of storage, store at -20 °C.

## Images

---



### Western Blotting

**Image 1.** METT5D1 antibody used at 1 ug/ml to detect target protein.