

Datasheet for ABIN631354

anti-STUB1 antibody (C-Term)



[Go to Product page](#)

1 Image

Overview

Quantity:	100 µL
Target:	STUB1
Binding Specificity:	C-Term
Reactivity:	Human, Mouse, Rat
Host:	Rabbit
Clonality:	Polyclonal
Conjugate:	This STUB1 antibody is un-conjugated
Application:	Western Blotting (WB)

Product Details

Immunogen:	STUB1 antibody was raised using the C terminal of STUB1 corresponding to a region with amino acids VDEKRKKRDIPDYLCGKISFELMREPCITPSGITYDRKDIEEHLQRVGHF
Specificity:	STUB1 antibody was raised against the C terminal of STUB1
Purification:	Affinity purified

Target Details

Target:	STUB1
Alternative Name:	STUB1 (STUB1 Products)
Background:	STUB1 modulates the activity of several chaperone complexes, including Hsp70, Hsc70 and Hsp90. It has E3 ubiquitin-protein ligase activity and targets misfolded chaperone substrates towards proteasomal degradation. STUB1 mediates transfer of non-canonical short ubiquitin

Target Details

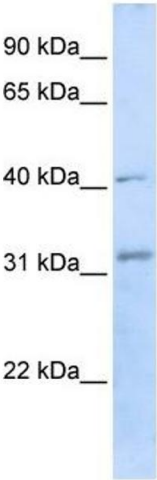
	chains to HSPA8 that have no effect on HSPA8 degradation.
Molecular Weight:	35 kDa (MW of target protein)
Pathways:	Regulation of Hormone Metabolic Process , Response to Water Deprivation

Application Details

Application Notes:	WB: 1 µg/mL Optimal conditions should be determined by the investigator.
Comment:	STUB1 Blocking Peptide, catalog no. 33R-9459, is also available for use as a blocking control in assays to test for specificity of this STUB1 antibody
Restrictions:	For Research Use only

Handling

Format:	Lyophilized
Reconstitution:	Lyophilized powder. Add distilled water for a 1 mg/mL concentration of STUB1 antibody in PBS
Concentration:	Lot specific
Buffer:	PBS
Handling Advice:	Avoid repeated freeze/thaw cycles. Dilute only prior to immediate use.
Storage:	4 °C/-20 °C
Storage Comment:	Store at 2-8 °C for short periods. For longer periods of storage, store at -20 °C.



Western Blotting

Image 1. STUB1 antibody used at 1 ug/ml to detect target protein.