

Datasheet for ABIN631357  
**anti-WWP2 antibody (Middle Region)**



[Go to Product page](#)

2 Images

## Overview

Quantity:	100 µL
Target:	WWP2
Binding Specificity:	Middle Region
Reactivity:	Human, Mouse, Dog
Host:	Rabbit
Clonality:	Polyclonal
Conjugate:	This WWP2 antibody is un-conjugated
Application:	Western Blotting (WB), Immunohistochemistry (IHC)

## Product Details

Immunogen:	WWP2 antibody was raised using the middle region of WWP2 corresponding to a region with amino acids EMKYTSEGVRYFVDHNTRTTTTFKDPRPGFESGTKQGSPGAYDRSFRWKYH
Specificity:	WWP2 antibody was raised against the middle region of WWP2
Purification:	Affinity purified

## Target Details

Target:	WWP2
Alternative Name:	WWP2 ( <a href="#">WWP2 Products</a> )
Background:	WWP2 is a member of the NEDD4-like protein family. The family of proteins is known to possess ubiquitin-protein ligase activity. WWP2 contains 4 tandem WW domains. The WW domain is a protein motif consisting of 35 to 40 amino acids and is characterized by 4

## Target Details

---

conserved aromatic residues. The WW domain may mediate specific protein-protein interactions.

Molecular Weight: 47 kDa (MW of target protein)

Pathways: [Negative Regulation of Transporter Activity](#)

## Application Details

---

Application Notes: WB: 1 µg/mL, IHC: 4-8 µg/mL  
Optimal conditions should be determined by the investigator.

Comment: WWP2 Blocking Peptide, catalog no. 33R-2586, is also available for use as a blocking control in assays to test for specificity of this WWP2 antibody

Restrictions: For Research Use only

## Handling

---

Format: Lyophilized

Reconstitution: Lyophilized powder. Add distilled water for a 1 mg/mL concentration of WWP2 antibody in PBS

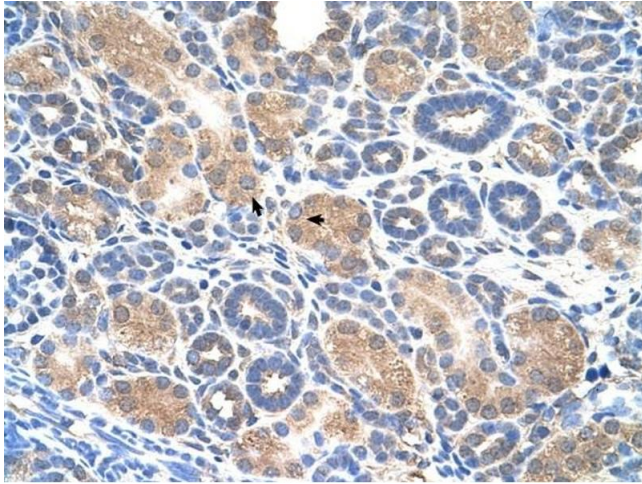
Concentration: Lot specific

Buffer: PBS

Handling Advice: Avoid repeated freeze/thaw cycles.  
Dilute only prior to immediate use.

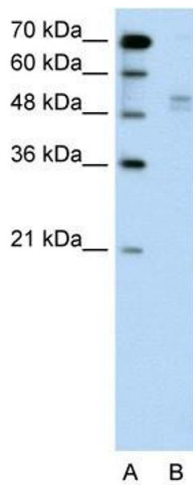
Storage: 4 °C/-20 °C

Storage Comment: Store at 2-8 °C for short periods. For longer periods of storage, store at -20 °C.



### Immunohistochemistry

**Image 1.** WWP2 antibody was used for immunohistochemistry at a concentration of 4-8 ug/ml to stain Epithelial cells of renal tubule (arrows) in Human Kidney. Magnification is at 400X



### Western Blotting

**Image 2.** WWP2 antibody used at 1 ug/ml to detect target protein.